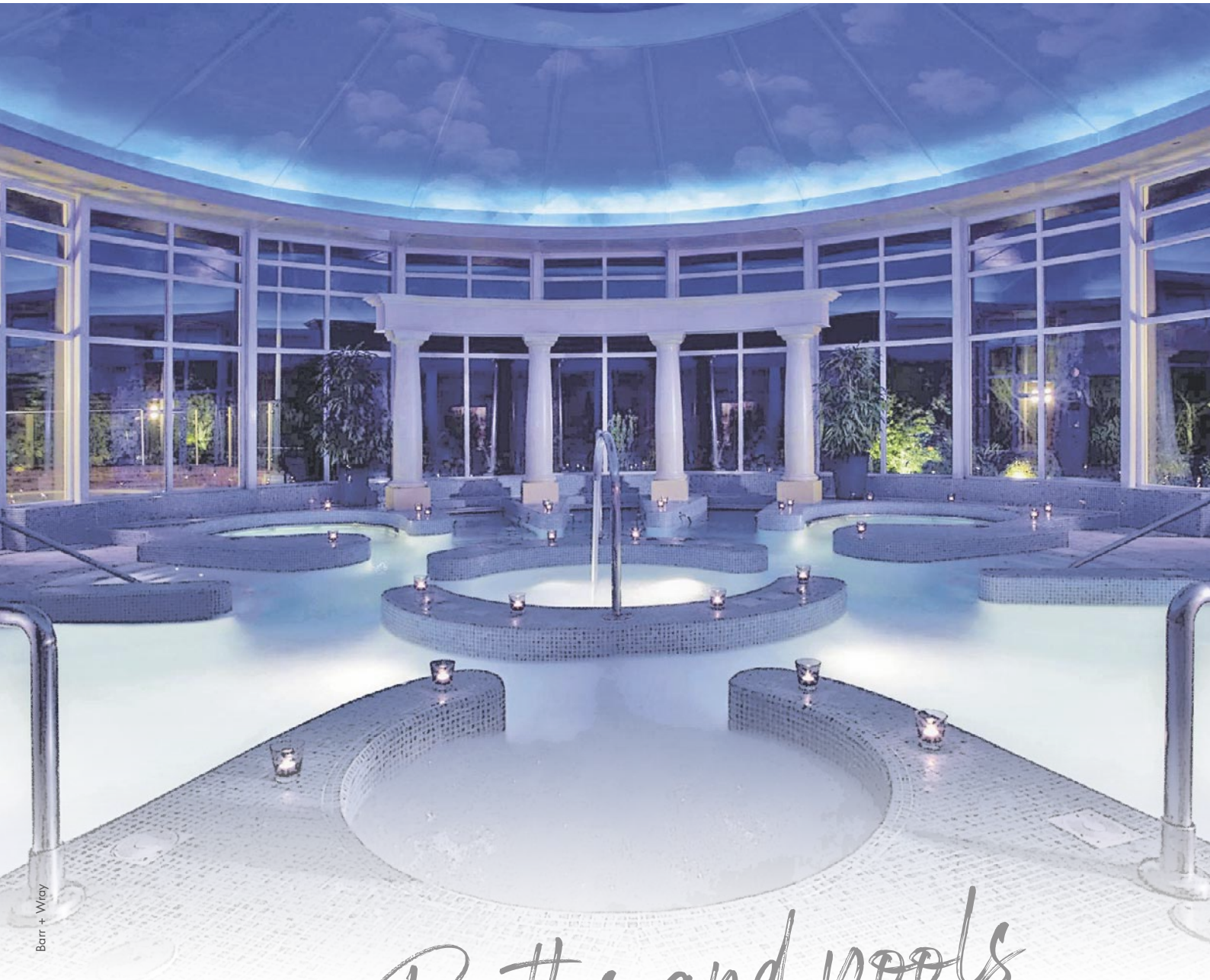


CONCEPT



Systems for wellness



Baths and pools

www.luxelements.com

Welcome to LUX ELEMENTS



Barr + Wray



The family-owned company LUX ELEMENTS is an experienced specialist in handling polystyrene hard foam and its further processing into secure substrates for bathrooms and wellness areas.

The product range is based on the ground-breaking invention of company founder Herbert Lux, patented in 1981: 'The Original' – a support element with a core of hard foam and double-sided mortar coating in which a stabilising glass fibre fabric is embedded.

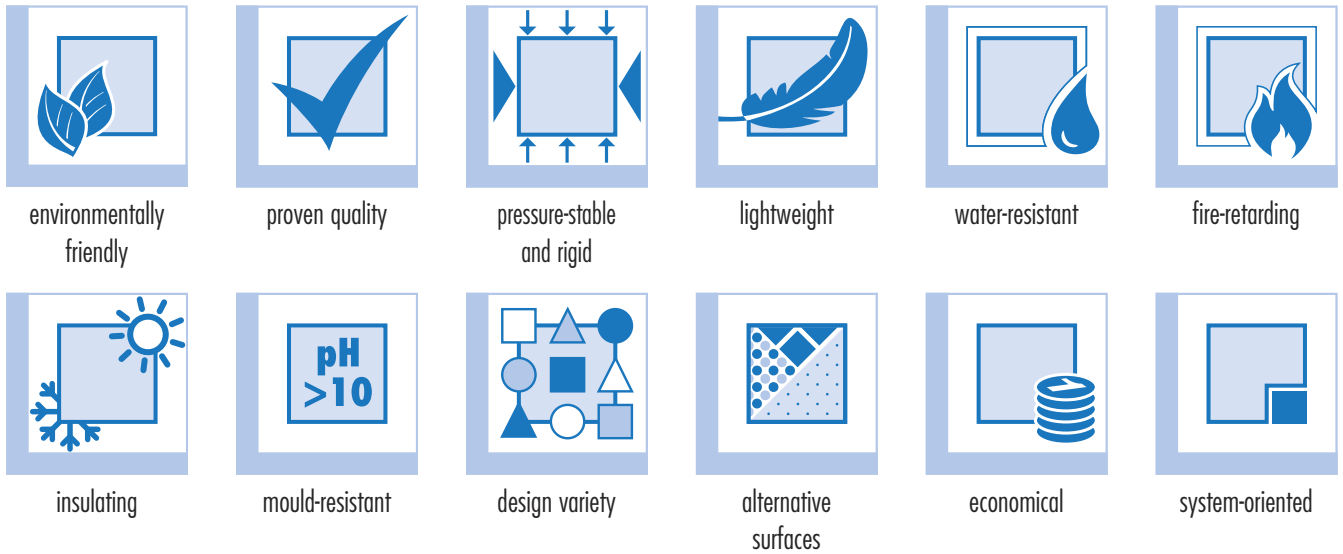
Starting from the construction panel in different thicknesses, the range has been constantly developed and expanded. Today, LUX ELEMENTS offers complete systems for **bathroom and shower, private spa and wellness.**



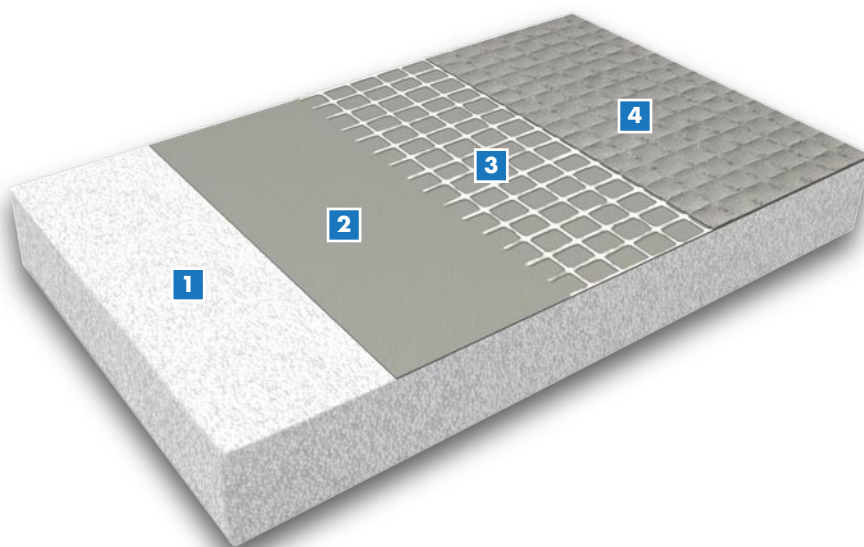
LUX ELEMENTS® – The original

On account of its outstanding physical properties in combination with very good workability, this moisture-resistant and modern building material creates free space for planners, designers, tradesmen and industry – whether in the form of panels, blanks or ready-made products.

Hard foam support elements from LUX ELEMENTS are characterised by these advantages:



Detailed information on the material properties can be found in the brochure 'Sustainability – The Original can do' (Download from www.luxelements.com under Downloads/Information brochure)



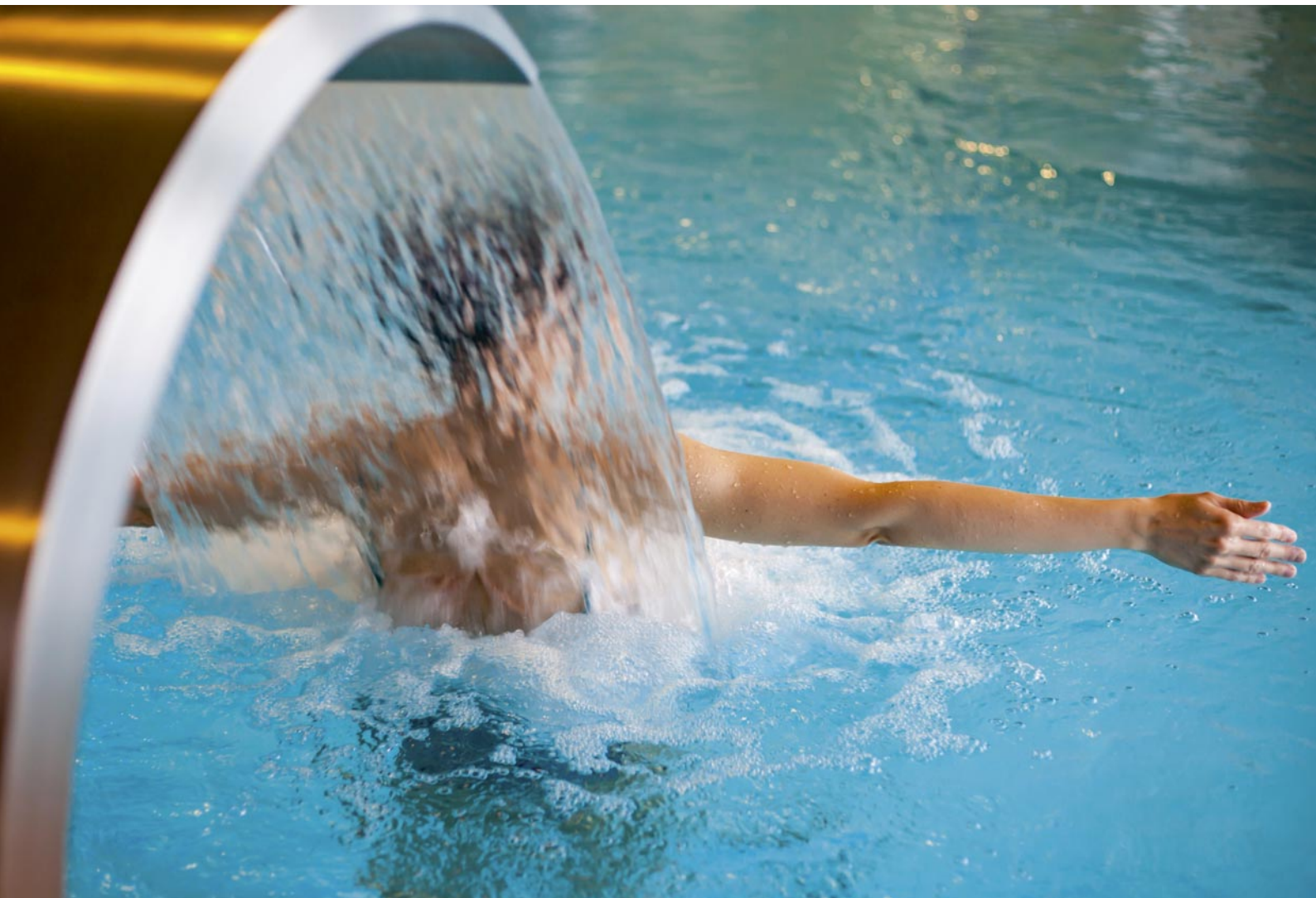
- 1** – Polystyrene hard foam (EPS)
- 2** – Contact mortar layer
- 3** – Glass fibre fabric
- 4** – Coating mortar layer

Baths and pools

No wellness facility should be without pools and baths.

LUX ELEMENTS manufactures individually planned straight, rounded or free-form pool walls and floors – also with overflow channels. We also supply matching extensions such as seats, stairs, platforms or technical solutions. These includes LED spots or jets.

We'll be glad to advise you on technical questions.





Systems for ...

Baths and pools

Content

■	Phase 1 – Design	8
1	Walls and floors – LUX ELEMENTS®-CONCEPT POOL-BE	10 – 13
■	POOL-BE G – Straight, angular	10
■	POOL-BE R – Round, rounded	12
2	Extensions – LUX ELEMENTS®-CONCEPT POOL-EW	
	e.g. stairs, platforms, benches	14
■	Phase 2 – Planning	16
■	Construction – Technical drawings (2D/3D) and plans, construction details	18
3	Technical solutions – LUX ELEMENTS®-CONCEPT POOL-TE	
■	POOL-TE ... – Swimming pool fittings, including floor drains, jets, and LED spot	20
	e.g., prefabrication of recesses, factory integration of built-in components	21
■	Phase 3 – Realization	22
■	Manufacturing – Quality Control – Logistics – Assembly	24
■	LUX ELEMENTS as partner – Our competence for your project	26

Phase 1

■ Design

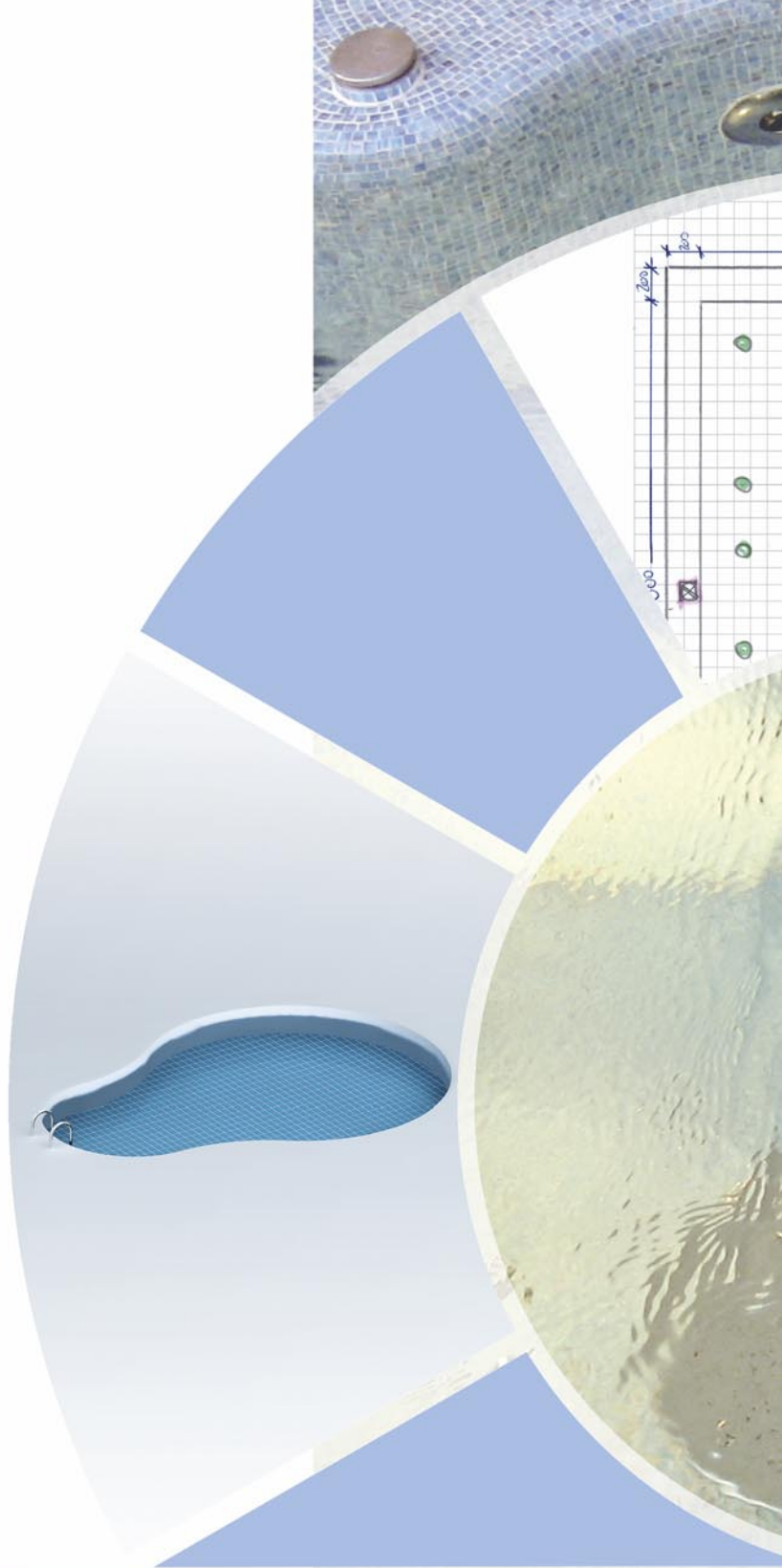
With every unique piece, it's primarily the idea that matters – regardless of whether, for example, it's ...

- 'just' casually scribbled,
- more or less meticulously thought out and drawn,
- a photorealistic rendering,
- or anything else...

Design and function are ultimately equally important – but first and foremost, the concept must be convincing!

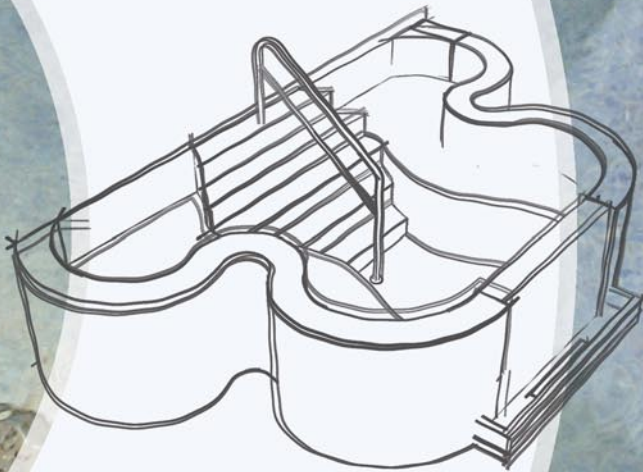
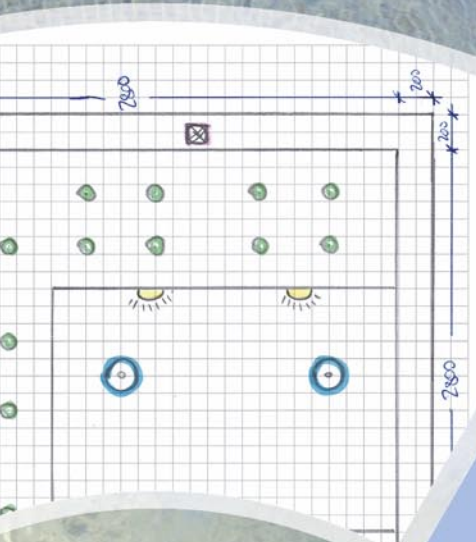
To successfully realize complex projects such as individual bath and pools, not only expertise and experience are required, but also continuous dialogue between all project participants.

Only in this way can a perfect result be ensured in the end, and the customer receives exactly what they were excited and convinced of from the beginning.



LUX ELEMENTS has always been committed to constructive and creative exchange – so that everyone benefits from comprehensive product knowledge and many years of experience!

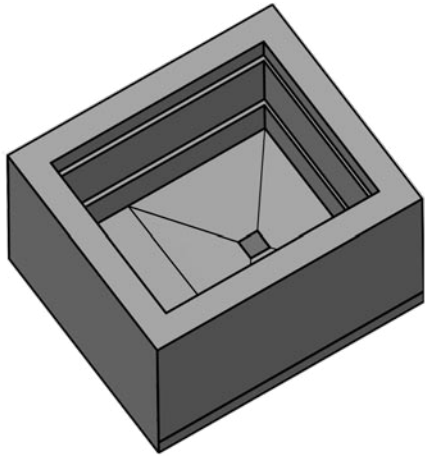




LUX ELEMENTS

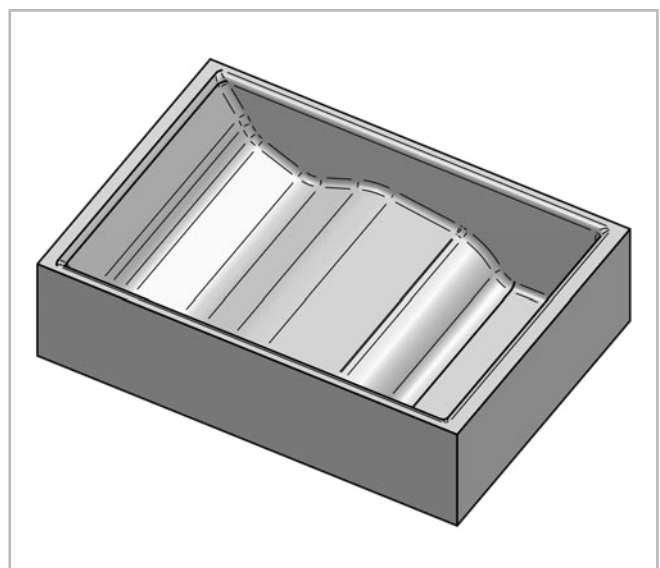
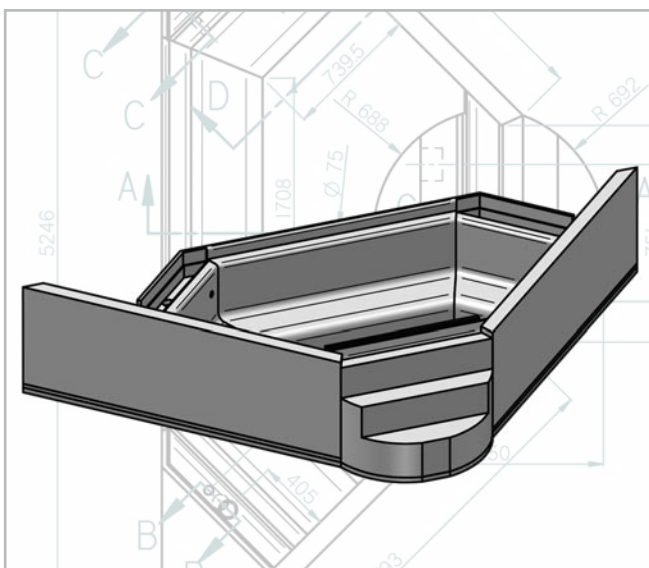
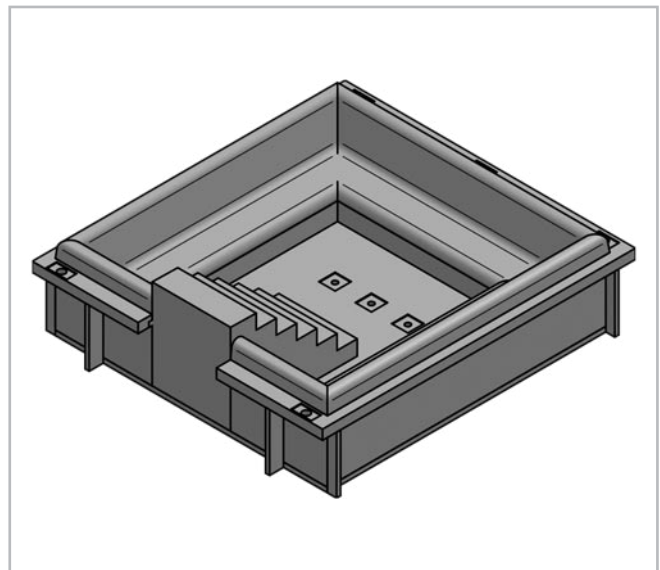
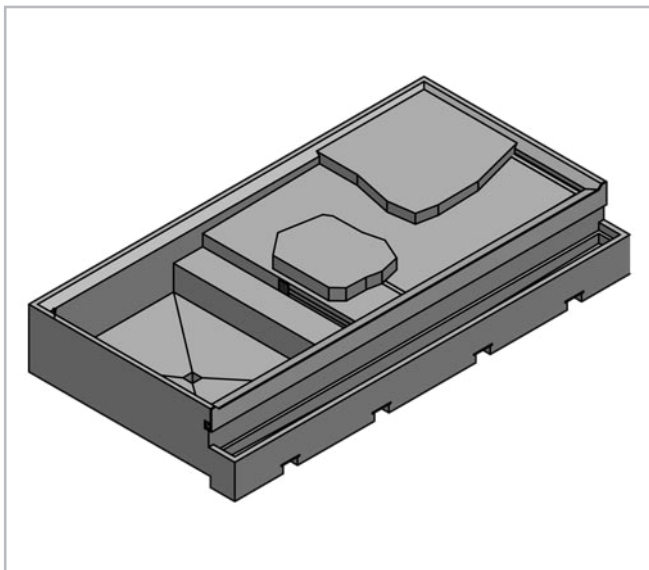
Straight, angular shapes

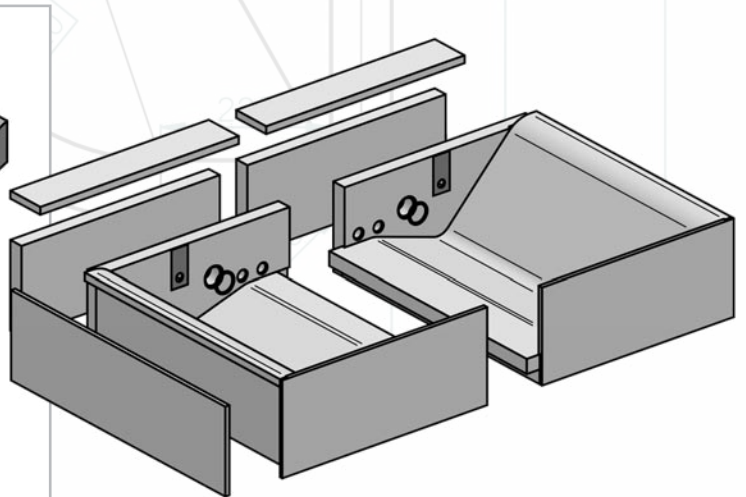
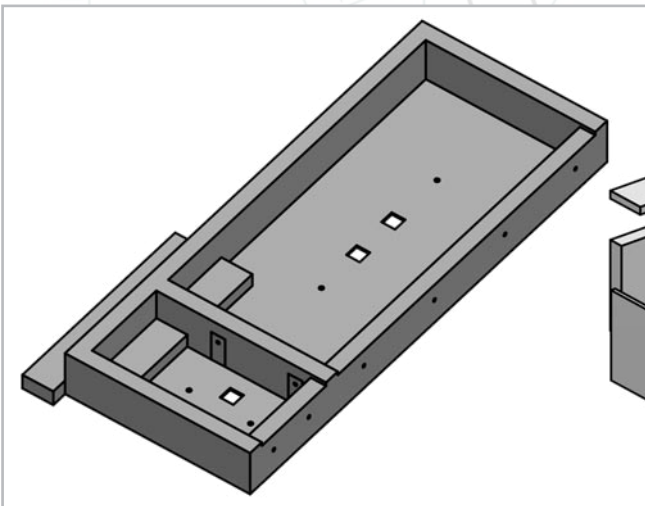
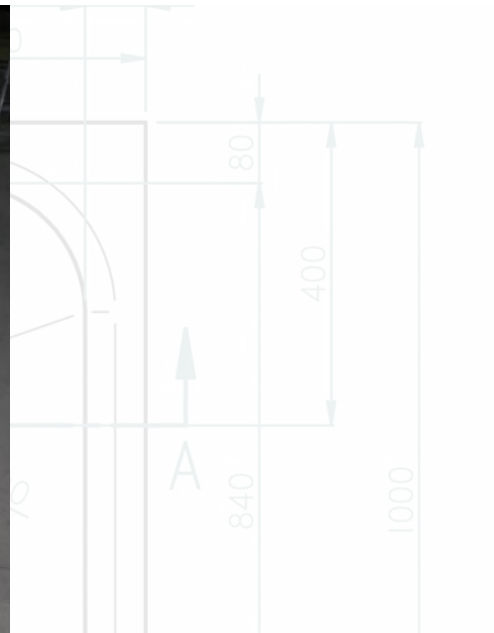
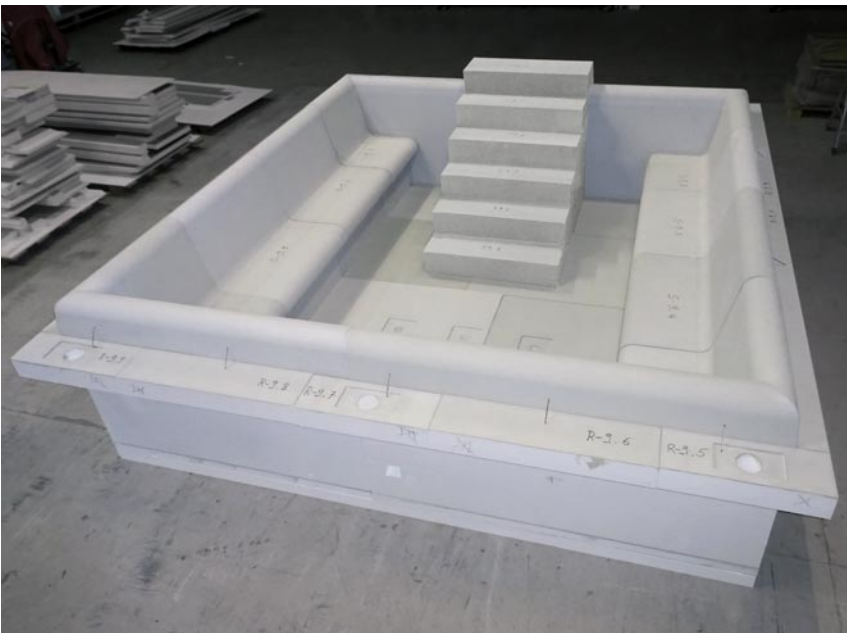
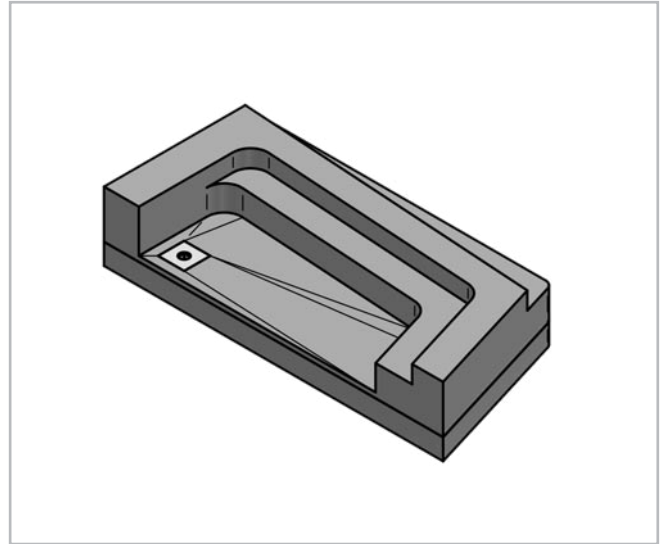
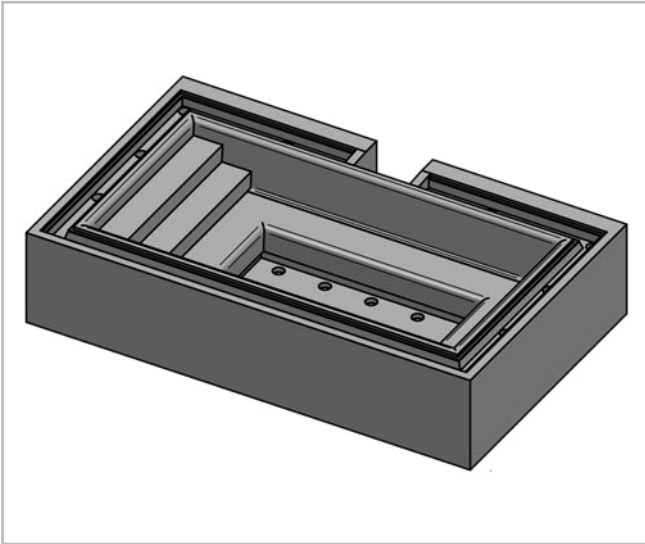
POOL-BE G



Regardless of the type of subsequent use, LUX ELEMENTS offers the following components for this basic design concept:

- Walls and floor made of hard foam support elements for square, rectangular, or polygonal pools
- **Optional:**
Extensions and/or technical solutions
→ page 18 and 20
- **Accessories (optional):**
Individually compiled assembly and sealing material
→ page 25

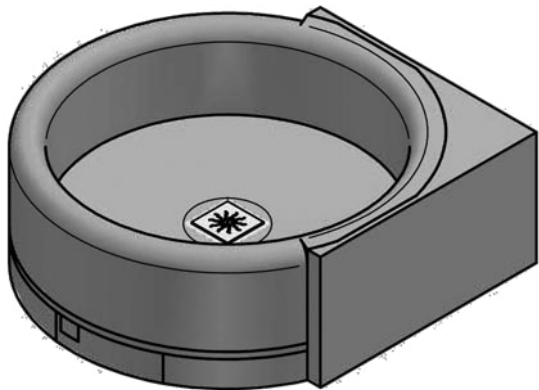




LUX ELEMENTS

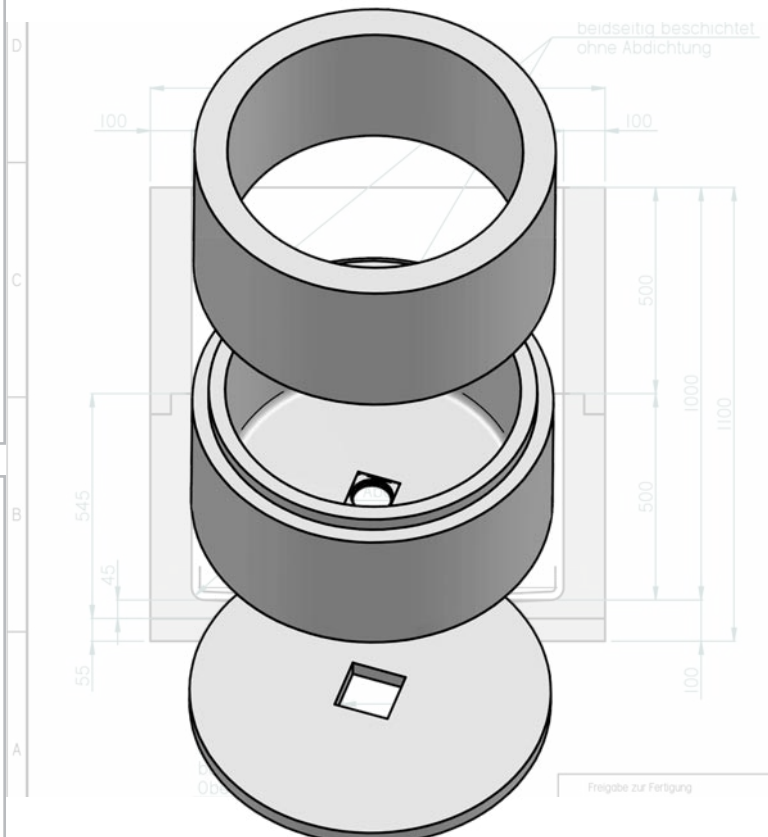
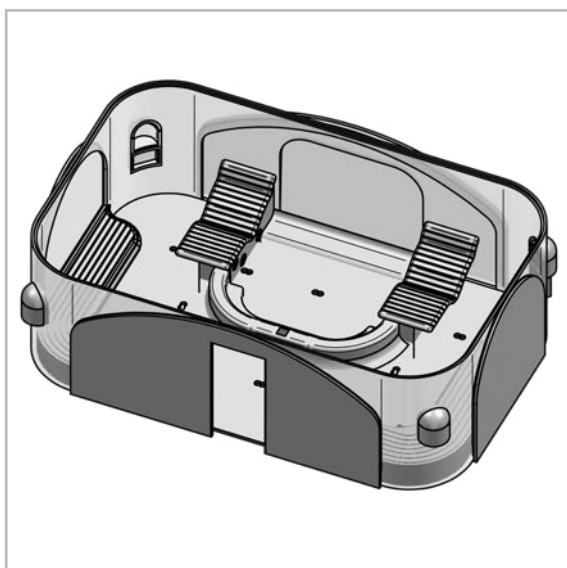
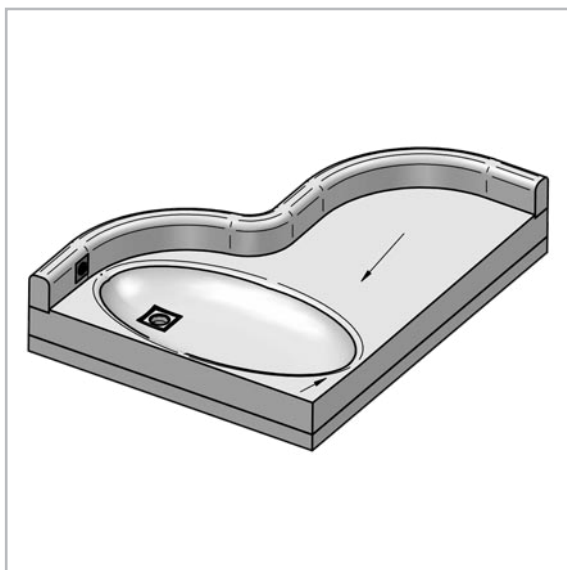
Round, rounded shapes

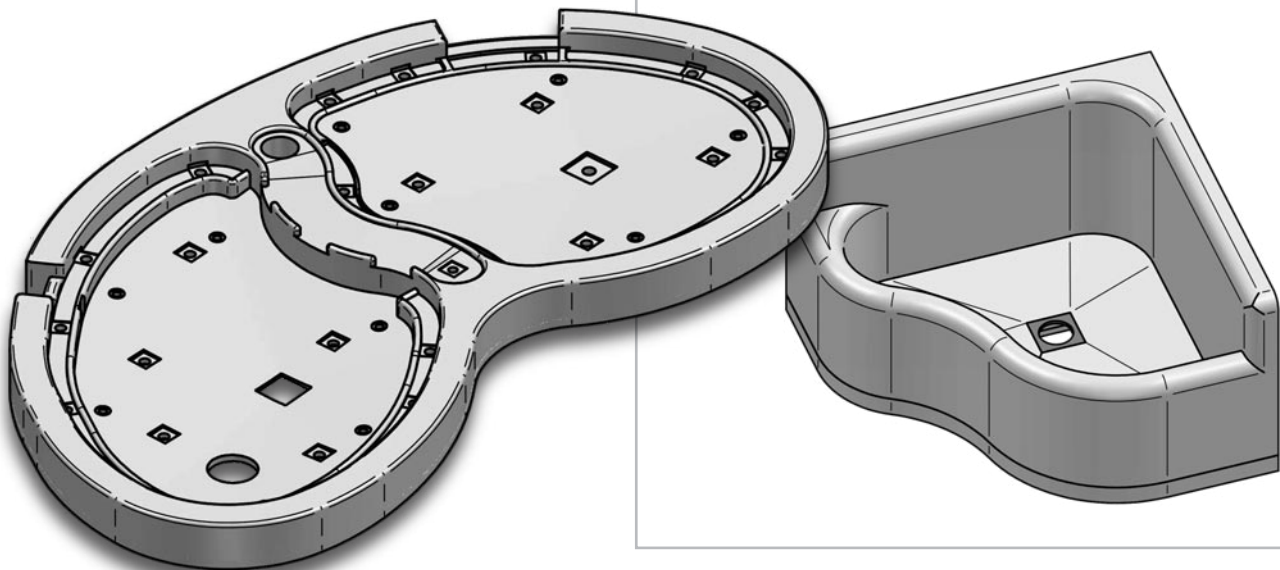
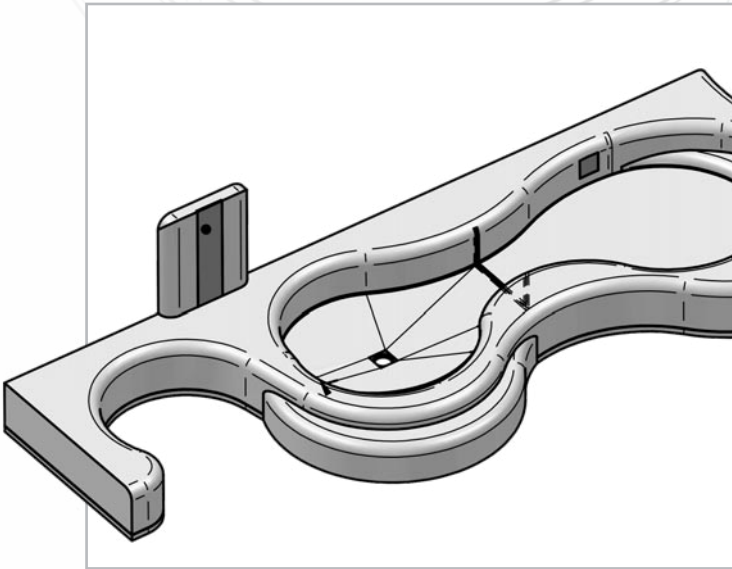
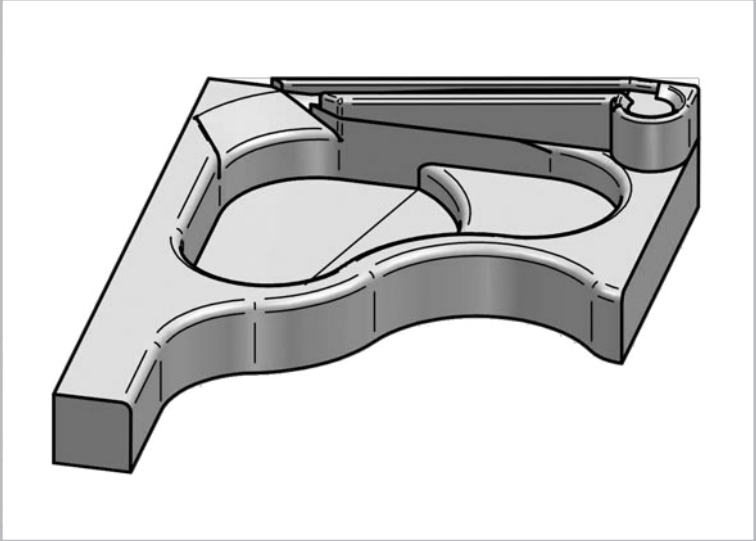
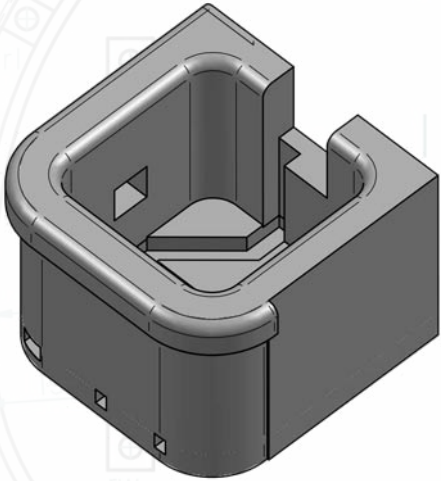
POOL-BE R



Regardless of the type of subsequent use, LUX ELEMENTS offers the following components for this basic design concept:

- Walls and floor made of hard foam support elements for round or rounded pools
- **Optional:**
Extensions and/or technical solutions
→ page 18 and 20
- **Accessories (optional):**
Individually compiled assembly and sealing material
→ page 25

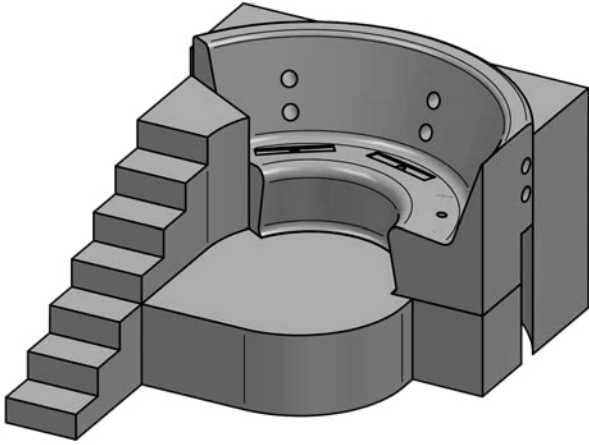




LUX ELEMENTS

Extensions

POOL-EW

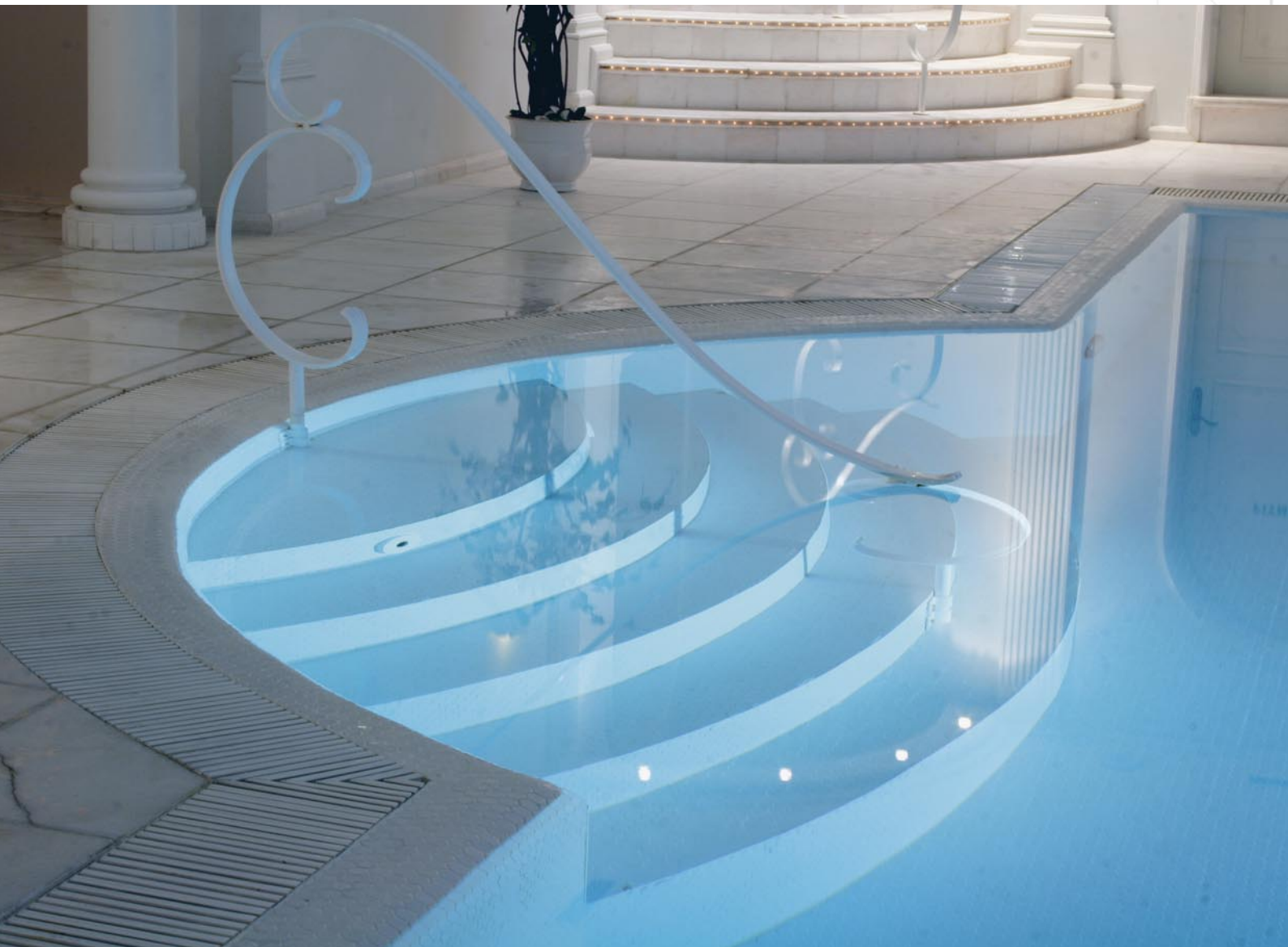


Regardless of the basic shape, it is the extensions, e.g. stairs, platforms or benches, that define the respective pool product and its type of use.

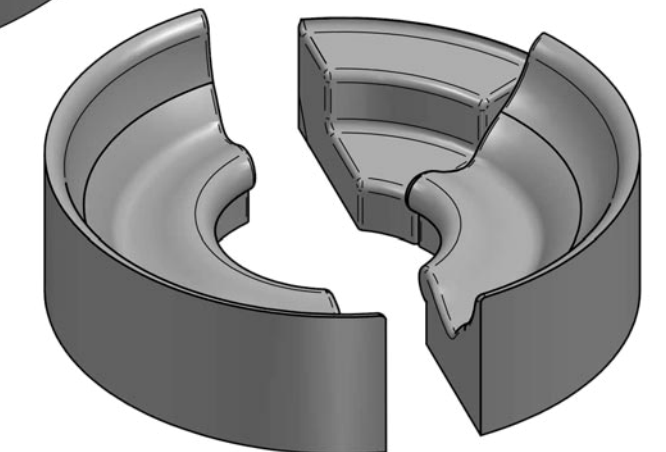
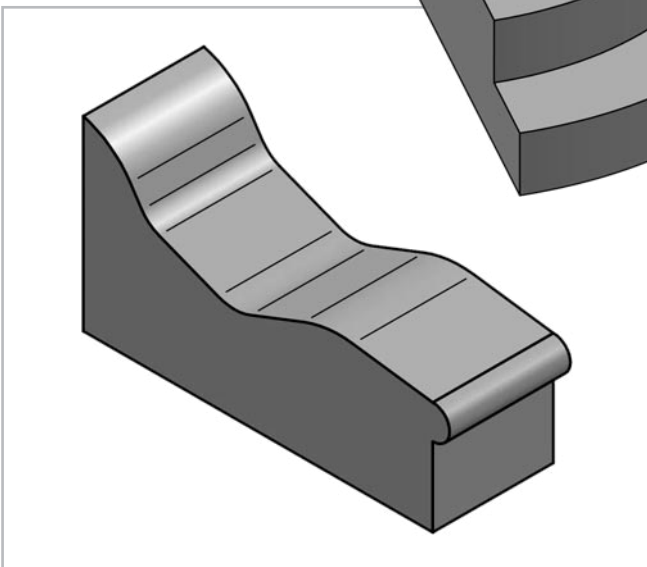
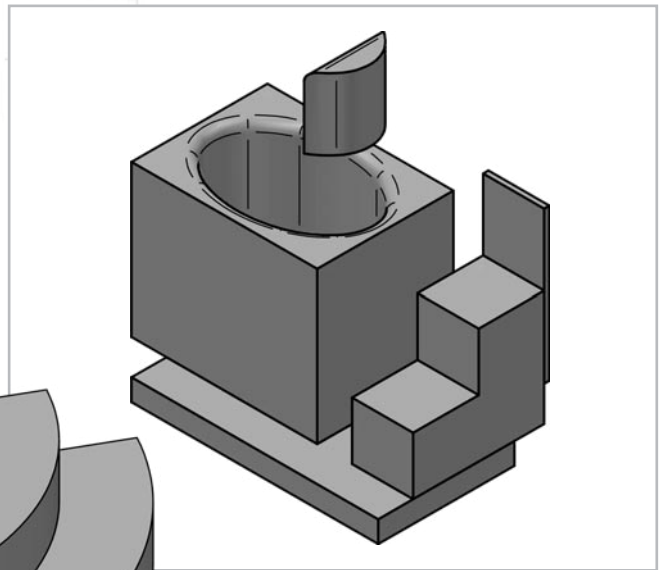
LUX ELEMENTS offers solutions for a wide variety of installations in bath and pools. It makes no difference whether the basic structure is made of hard foam support elements or a classic construction method, such as concrete.

Curves and ergonomic shapes, especially those often desired for seating, are particularly difficult, if not impossible, to produce using conventional methods.

It's easier and faster with hard foam support elements from LUX ELEMENTS.



- Suitable for installation in pool structures made of hard foam support elements or concrete
 - Stairs in straight and round shapes
 - Platforms
 - Benches
 - ...
- **Optional:**
Technical solutions
→ page 20
- **Accessories (optional):**
Individually compiled assembly and sealing material
→ page 25



Phase 2

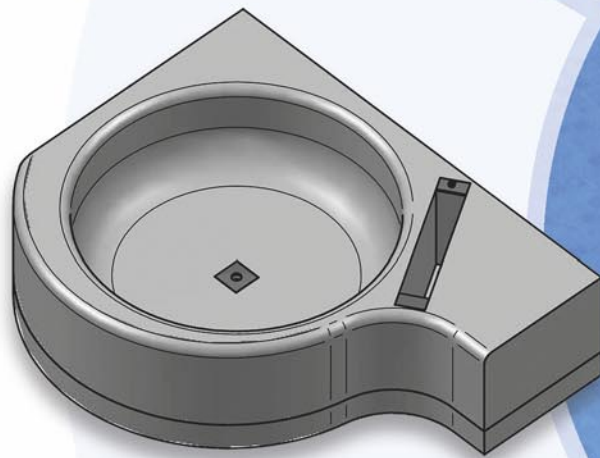
■ Planning

Once the fundamental decisions regarding the concept to be implemented have been made, the important planning phase follows. This includes, among other things:

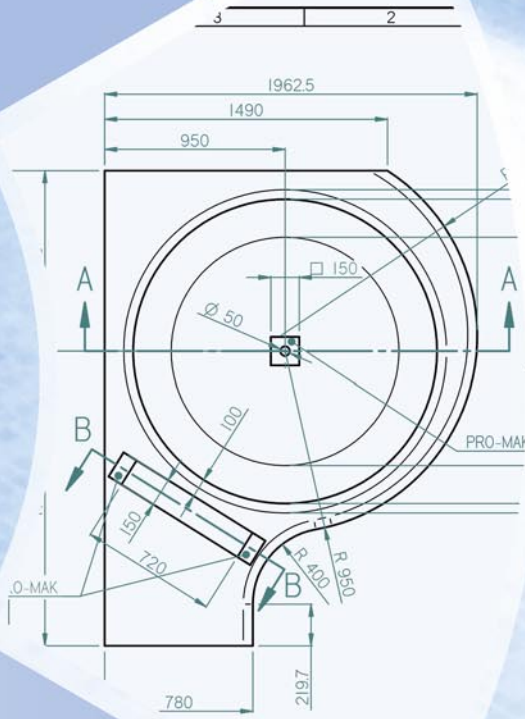
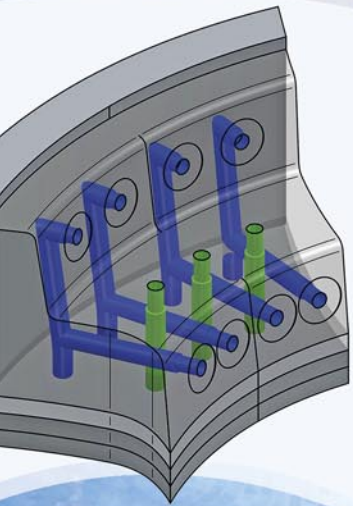
- defining any desired technical equipment (e.g., nozzles, LED spots, etc.)
- the structural implementation
- the technical planning (e.g., piping, etc.)

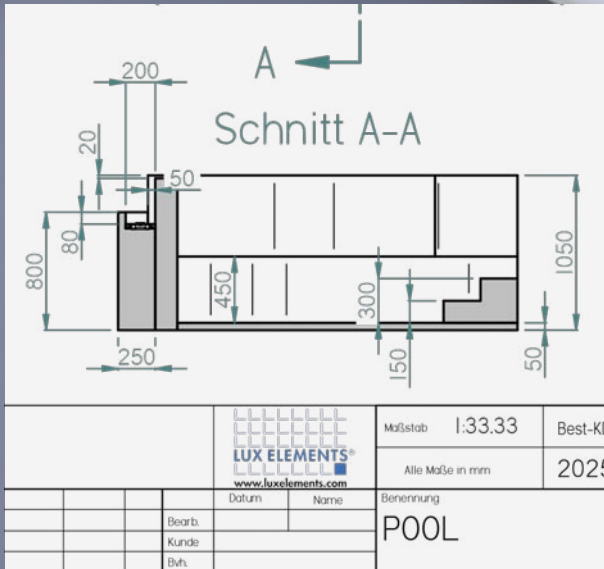
LUX ELEMENTS is not only an experienced specialist in handling and processing hard foam support elements, but also offers comprehensive support and advice on all planning-related matters with its in-house construction department and team of application engineers.

This includes, for example, detailed 2D and 3D technical drawings for reliable coordination – leaving nothing to chance.



Well planned is half built!
In dialogue with the experts from LUX ELEMENTS, all project details are discussed and competently implemented in the planning – right up to final approval.

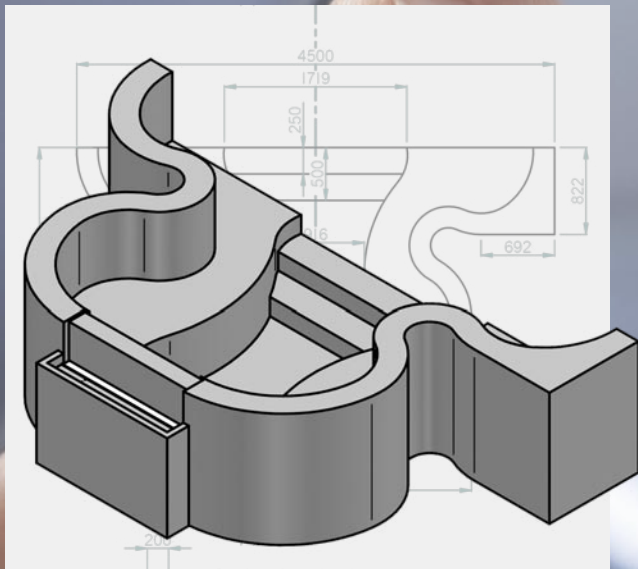




■ Technical Drawings (2D)

At LUX ELEMENTS, short communication channels are not only extremely important in our collaboration with customers, but also a lived reality within the company. The design department is therefore closely connected to the production areas, both physically and organizationally.

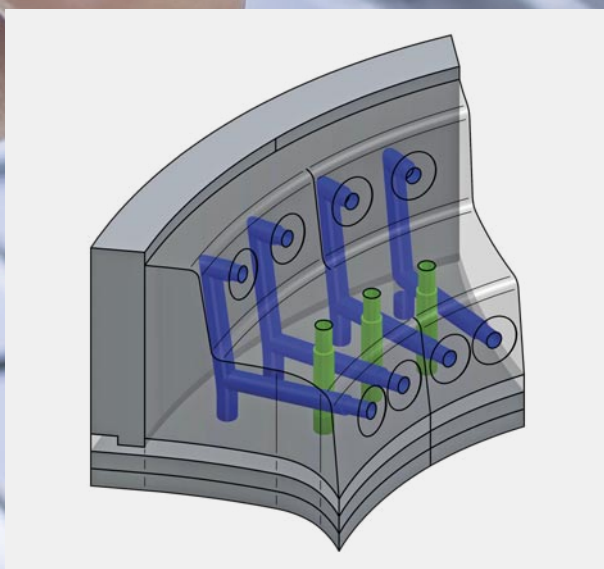
In this way, everyone benefits from each other's knowledge, and the resulting technical drawings serve not only for external coordination but also directly as manufacturing documents. A significant advantage!



■ Technical Drawings (3D)

Especially when manufacturing individual and innovative shapes, the most accurate possible anticipation of the final result is crucial.

LUX ELEMENTS relies on state-of-the-art software solutions and clear, even interactive, 3D visualizations throughout the necessary planning and coordination process. This ensures that all project participants always have a precise picture of the design status.



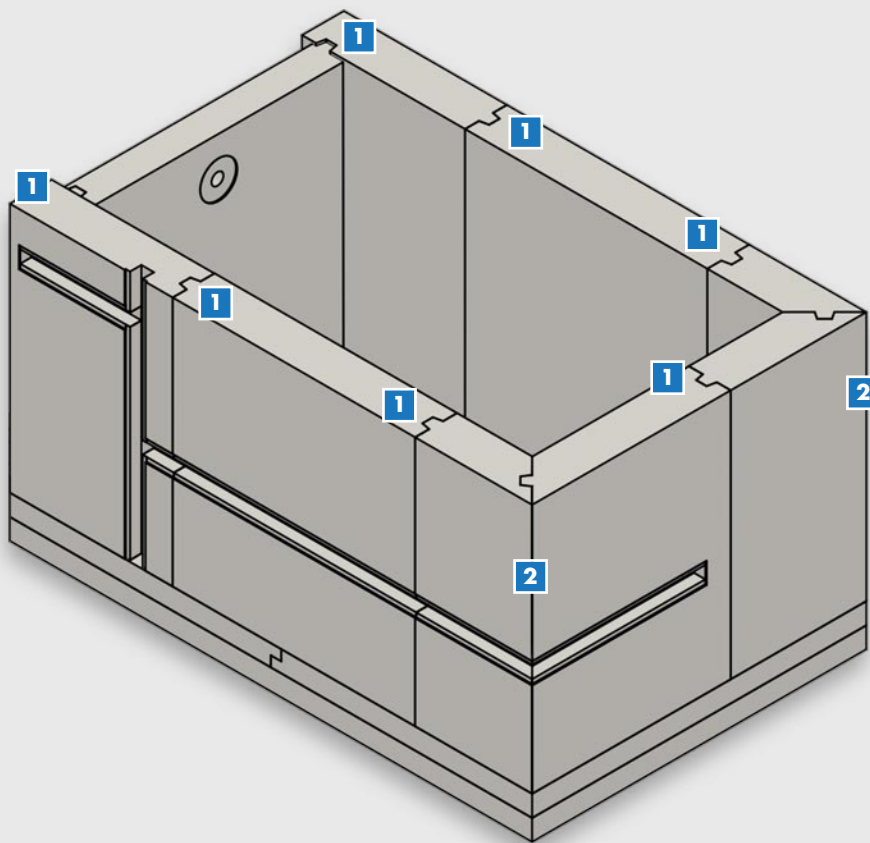
■ Technical Planning

A modern pool, individually designed and equipped according to customer specifications, can sometimes be very complex. The more technology is installed, the more demanding the corresponding planning becomes.

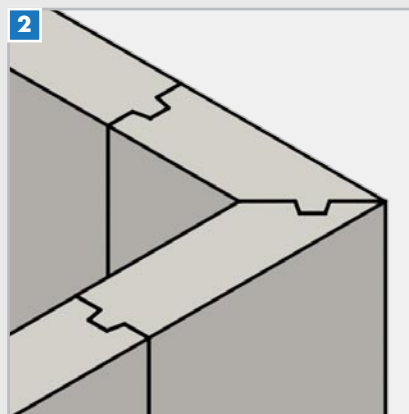
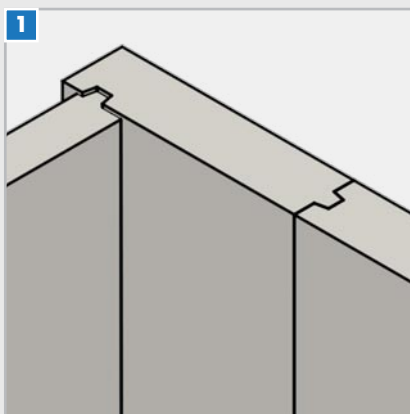
The hard foam support elements from LUX ELEMENTS are ideally suited for integrating various technical components such as pipe penetrations or conduits – even with factory pre-assembly! Our application engineering team is also available to provide expert advice on all related matters.

■ **Technical information concerning connections**

The method of construction for the connection of the individual components ensures decisive advantages:



- Fast and simple assembly thanks to optimised fitting accuracy of the elements
- High production accuracy thanks to the use of state-of-the-art cutting technologies



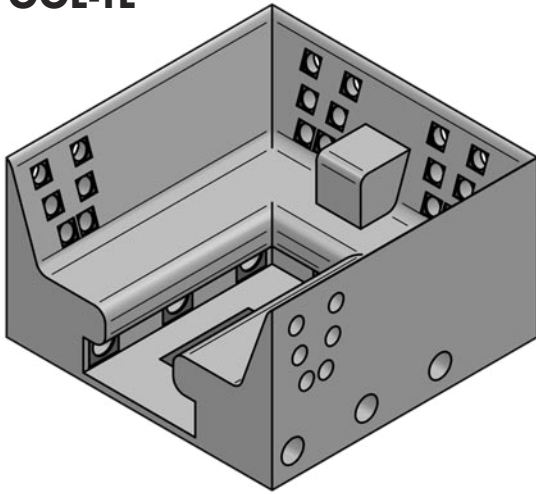
- Selflevelling panel connection thanks to V-groove
- Corners glued in the factory

PLEASE NOTE: Design varies depending on the wall thickness. Pictures show the design with a wall thickness of 200 mm.

LUX ELEMENTS

Technical solutions

POOL-TE

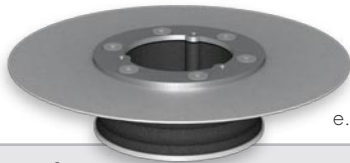


■ POOL-TE ... – Swimming pool fittings

1



2

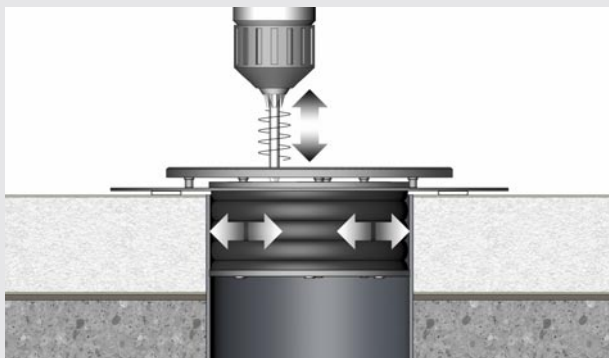


e.g. POOL-TE BA-W-R

■ Basic principle

- 1 – **Cover**, stainless steel (standard color: natural chrome steel), round, various designs depending on the function
- 2 – **Mounting frame**, stainless steel round, various designs, for holding the respective cover and part of the complete sealing system

■ Functional principle



Safe and quick installation – thanks to a unique, patented system

The respective **mounting frame** is inserted into a pipe or wall penetration and then tightened using the **screws**. The visible **covers** are then attached to the mounting frame. This allows the system to withstand a pressure of **up to 5 bar!**

In addition to the extensions (→ page 14), it is primarily the technology used that determines the type and use of a bath or pool.

LUX ELEMENTS' technical installations include not only various swimming pool fittings but also many features that significantly simplify work on the construction site.

These include, among other things, the precise prefabrication of recesses and – upon request – factory pre-piping.

The swimming pool fittings offered by LUX ELEMENTS blend elegantly into the design of a pool and create almost seamless transitions.

Floor drain, piezo push-button, massage jet, inlet and air bubble nozzle – all built-in parts are available in a consistent design made of high-quality stainless steel for the various pool types.

The **LED spot** – consists of 100% sealed LED boards and offers various color settings.

■ Floor drain

Ø 144 mm



■ Piezo push-button

Ø 88 mm



■ LED spot

Ø 110 mm



■ Massage jet

Ø 88 mm



■ Inlet nozzle

Ø 88 mm



■ Air bubble nozzle

Ø 88 mm



The **skimmer** – was specifically designed for hot tubs or small pools. With an installation depth of 115 mm, it fits easily even into narrow pool walls.

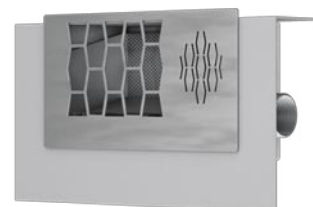
■ Skimmer

Installation depth: 115 mm

Connection:

1.5", external thread

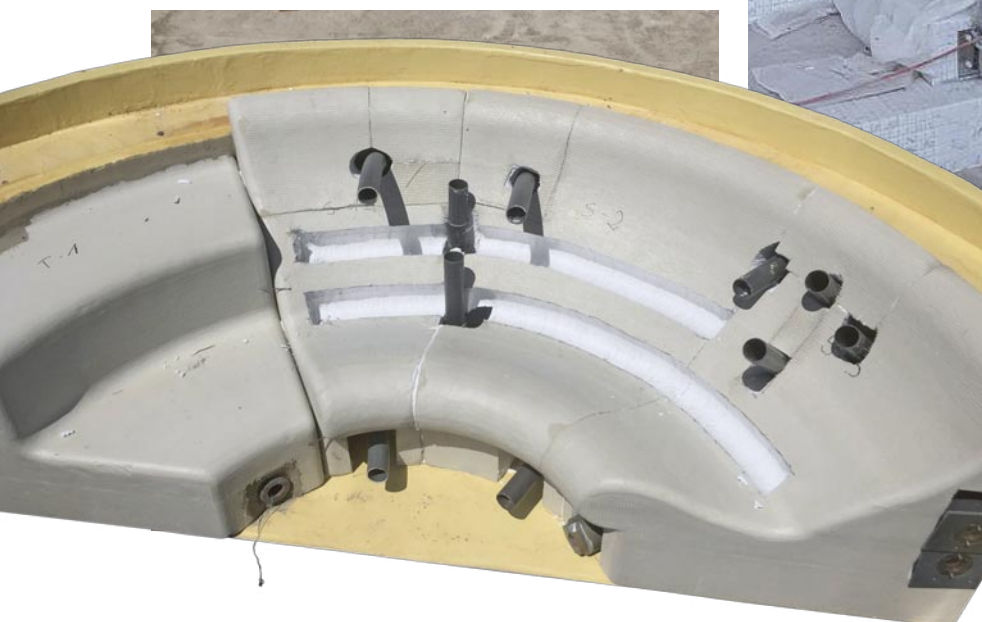
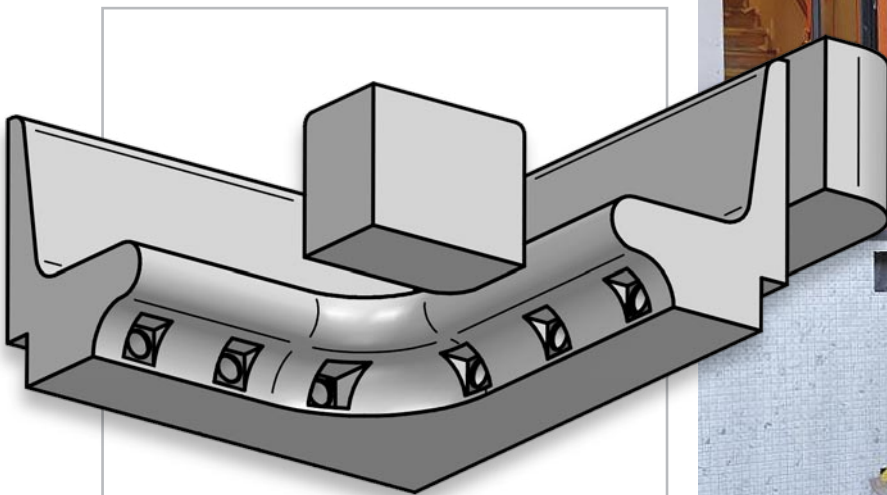
Water flow: 3 – 9 m³/h



BATHS AND POOLS PLANNING PHASE / TECHNICAL SOLUTIONS



- Prefabrication of recesses for fixtures, pipes, and technical components
- Factory integration of flush-mounted and built-in components, such as railing fastenings
- Factory-installed piping including all necessary connections
- Range of various swimming pool fittings, e.g. floor drain, jets or LED spots
- **Optional:** Extensions → page 14
- **Accessories (optional):** Individually compiled assembly and sealing material → page 25



1000

Phase 3

■ Realization

Once the planning is successfully completed and all necessary approvals have been granted, the final step is practical implementation – including...

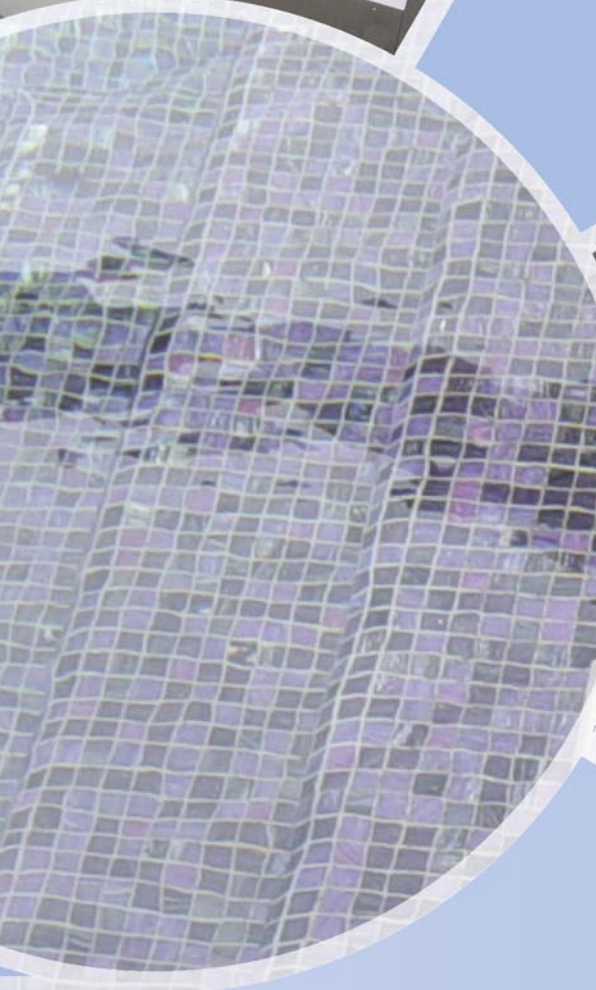
- manufacturing
- internal quality control, incl. assembly and documentation
- logistics (national and international)

The client then ensures on-site that the segmented and labeled components are installed and assembled. The individual assembly plan assists with this process. LUX ELEMENTS also offers suitable materials for assembly and subsequent sealing as an option.

After successful functional testing and completion of the surface work (usually tiling), all that remains is the handover of the custom-built pool to another satisfied customer.



Bonding, reinforcing, filling... and then finally sealing – the assembly of a pool construction from LUX ELEMENTS becomes a quick and easy matter on the construction site.



Phase 3 – good

■ Manufacturing



■ Quality Control



At our two production sites in Leverkusen, experienced employees use state-of-the-art manufacturing processes to produce the desired components – individually or in series.

From the selection of raw materials and through each production step to safe processing, the concept of continuous quality assurance guides our actions.

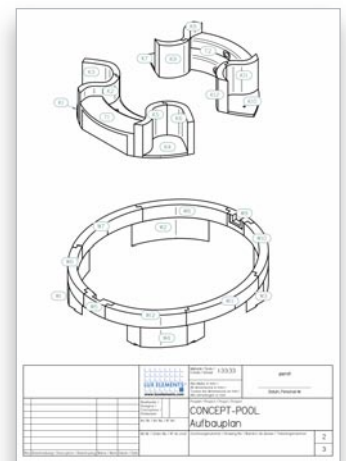
The hard foam support element is a true all-rounder in design. It offers countless design possibilities and knows no limits in terms of shaping. As the inventors of this product, which was patented in 1981, we already have decades of experience in its manufacture and processing.

Therefore, all finished parts are test-assembled at the factory, and the individual segments are numbered. This forms the basis for a project-specific assembly plan, which is included with the general assembly instructions and shipping documents.

Thanks to the ongoing dialogue with users in the field, our manufacturing processes are continuously reviewed and improved with a focus on quality and environmental compatibility.



This practical procedure ensures that only flawless goods are delivered and that everything runs smoothly on the construction site... Because: our top priority is satisfied customers who trust in the quality and advantages of our products.



to know ...

■ Logistics



With over 30 years of international experience and its own warehousing and logistics department, LUX ELEMENTS is ideally positioned for efficient worldwide shipping.

Only when the products arrive at their destination complete, safe, and undamaged is the order truly fulfilled. To ensure this, we professionally package the goods ready for shipment and dispatch them using the most suitable means of transport

Our customers and partners, especially in export, benefit from our AEO certification, which, among other things, enables



simplified and often expedited customs procedures and includes automatic recognition by CTPAT.

■ Assembly



To ensure our products are processed correctly at their place of use, we conduct training sessions by arrangement, in which we provide theoretical and practical instruction on the application of hard foam support elements.

For the fast, safe and trouble-free processing, we also offer a system of specially developed and field-proven adhesives and mortars, sealing tapes, mounting brackets, dowels and technical accessories.



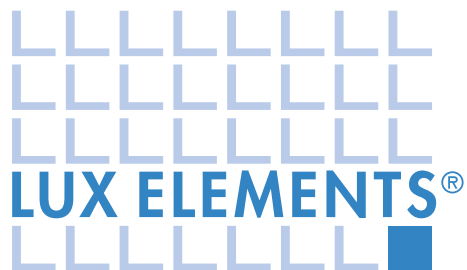


LUX ELEMENTS as partner

Our competence for your project

- **Decades of experience**
in the manufacture and processing of hard foam support elements
- **Modern flexible production methods**
in our own production plants – Made in Germany
- **Individual production**
of your components as individual or series products
- **High level of technical expertise**
owing to our own development department
- **International team**
with multilingual contacts
- **Professional advice**
by experienced, long-term employees
- **Quality control from the start**
through a high percentage of in-house production
- **In-house quality management**





Berr + Wray

D LUX ELEMENTS GmbH & Co. KG

An der Schusterinsel 7 · D - 51379 Leverkusen
Tel. +49 (0) 21 71/72 12-0 · info@luxelements.de

F LUX ELEMENTS S.A.S

ZI-31, rue d'Ensisheim · F - 68190 Ungersheim
Tél. +33 (0) 3 89 83 69 79 · info@luxelements.fr



www.luxelements.com