

## Installation guide

- TUB-BOL 900/1850 H
- TUB-BOL 900/1850 M
- TUB-BOL 750/1850 H
- TUB-BOL 750/1850 M
- with TUB-KIT TRAY

**SOLUTIONS!**  
FOR MODERN BUILDING DESIGN

### ■ Tools required (not supplied)

- Paint Brushes (2)
- Pencil
- Jig Saw (recommended)  
or Hard Point Saw
- Eye Protection
- Protective Gloves
- Notched Adhesive Trowel
- Bucket
- Solvent Weld Waste Adhesive
- Measuring Jug
- Tape Measure
- Straight Edge
- Junior Hacksaw
- Breathing Protection
- Level
- Sealant Gun
- Screwdriver PZ2
- Silicone

### ■ Important Information

#### ■ PLEASE READ THESE INSTRUCTIONS THOROUGHLY BEFORE STARTING INSTALLATION.

The waste pipe must run in the same direction as your floor joists so please check your joists before starting installation.

Check the pack and make sure you have all the parts listed.

If the LUX ELEMENTS®-TUB shower tray (A), LUX ELEMENTS®-TUB shower tray base (B) or the LUX ELEMENTS®-TUB shower tray extension (C) have slightly damaged edges there is no need to return the product as these can easily be repaired and most minor damage will naturally be covered during installation. Should you need to patch a repair that won't be naturally covered you should do so when you complete steps 16 and 17 in exactly the same way as you would seal a joint with DRY-DB waterproofing tape (K) and DRY-ASK tape sealer (L).

#### ■ DO NOT PLACE STEP LADDERS OR HEAVY ITEMS ONTO THE LUX ELEMENTS®-TUB SHOWER TRAY (A), LUX ELEMENTS®-TUB SHOWER TRAY BASE (B) OR LUX ELEMENTS®-TUB OR SHOWER TRAY EXTENSION (C) AS THIS COULD PUNCH A HOLE THROUGH THE SURFACE.

Certain spare parts and additional components are available if necessary and these can be obtained by calling the help line number at the end of the instructions. When you are ready to start, make sure that you have the right tools to hand and that the installation area is clean and dry.

When drilling or fixing into walls or floors it is essential that you check for pipes and wires before commencing.

#### ■ Site Preparation

This product is suitable for use on solid concrete floors and wooden floors.

All floor types need to be clean, dry and dust free.

All floor types need to be as flat and level as possible.

Floor boards must be securely fixed down prior to installation.

All derivatives of wooden floors need to be treated with the COL-HSV wood floor primer (N) prior to installation.

**PVA MUST NOT BE USED IN PLACE OF THE COL-HSV WOOD FLOOR PRIMER (N).**

This product is not suitable for use on MDF.

Prior to installation you will need to have access to a wastepipe in the correct position.

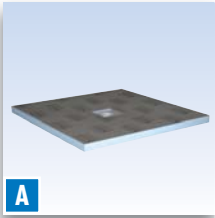
Please ensure that the wastepipe is accessible and any alterations to the floor are completed prior to installation.

#### ■ The following should be taken into consideration for LUX ELEMENTS®-TUB-BOL ... M

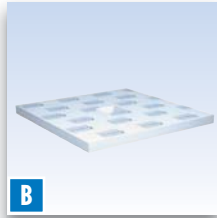
You will require a minimum of 20 mm clearance beneath the shower base to allow for the shower waste pipe run. This can be achieved by notching / chasing out the floor accordingly (contact our Sales Office on +49 2171/7212-0).

■ Parts supplied

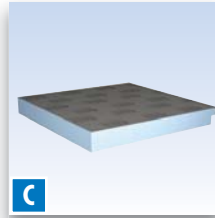
LUX ELEMENTS®-TUB-BOL ... H & M



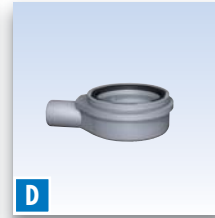
1x TUB-BOL ...  
Shower Tray



1x TUB-BOL ...  
Shower Tray Base



1x TUB-BOL ...  
Shower Tray Extension



1x TUB-BAW  
Shower Drain Base



1x TUB-BAZ BST  
Shower Drain Connector



1x TUB-BAW  
Shower Drain Internal Bowl



1x TUB-BAW  
Shower Drain Internal Dome



1x TUB-BAW  
Shower Drain Finishing Top



1x TUB-BAW  
Shower Drain Finishing Grade



1x COL-AK  
Adhesive Bag (5 kg)



1x DRY-DB  
Waterproofing Tape (5 m)



1x DRY-ASK  
Tape Sealer (3.5 kg)



2x DRY-DBIE  
Waterproofing Internal Corner



1x COL-HSV  
Wood Floor Primer (1 kg)



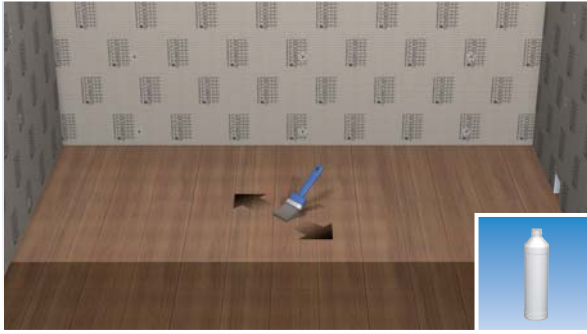
1x COL-MK  
Adhesive Tube (290 ml)



1x TUB-GEL  
Lubricant (8 g)

■ Parts supplied

LUX ELEMENTS®-TUB-KIT TRAY



### Step 1

If you are installing onto a wooden floor, make sure that the existing floor boards or sheets are fully secured down and as level and flat as possible. Paint the floor area where the shower will sit with the COL-HSV wood floor primer (N).

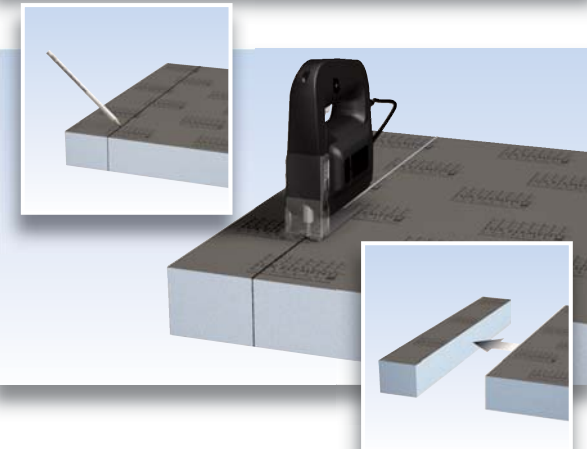
**PVA MUST NOT BE USED IN PLACE OF THE COL-HSV WOOD FLOOR PRIMER (N).**

Leave to dry for at least 2 hours.



### Step 2

Measure the required overall length of the shower area with a tape measure. We would not recommend an area less than 1200 mm in length because this would not allow a wide enough opening to get in and out of the shower easily.



### Step 3

The overall pack length is 1850 mm and any reduction required should be cut from the flat end of the TUB-BOL shower tray extension (C) not the end with a lip which is the overlap that will join to the TUB-BOL shower tray base (B). Thus if you require a finished length of 1700 mm you should cut 150 mm from the flat end of the TUB-BOL shower tray extension (C).

Carefully mark the cut position using a pencil and straight edge. Cut the tray carefully using a jig saw or a hand point saw. Lay the TUB-BOL shower tray base (B) and TUB-BOL shower tray extension (C) into the required position to check the fit.

# LUX ELEMENTS®-TUB-BOL ... H & M & TUB-KIT TRAY

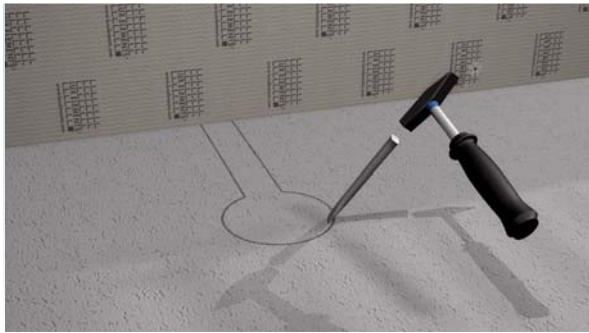
## Step 4

For water to drain away properly, the wastepipe must have a fall of at least 3 cm per metre. Make any alterations to your wastepipe and test fit the TUB-BAW shower drain base (D) but do not solvent weld yet. Carefully remove the TUB-BAW shower drain base (D), TUB-BOL shower tray base (B) and TUB-BOL shower tray extension (C) and store somewhere safe.



Notching out 20 mm for drain clearance, or raising the system with COL-AK adhesive (J) is not necessary with 150 mm high kits.

**IMPORTANT** (LUX ELEMENTS®-TUB-BOL ... M only)  
On timber construction, please cut an area in the floor to locate 20 mm depth of the drain section.



**IMPORTANT** (LUX ELEMENTS®-TUB-BOL ... M only)  
On concrete construction, please cut an area in the floor to locate 20 mm depth of the drain section and a sufficient fall for the waste.



**IMPORTANT** (LUX ELEMENTS®-TUB-BOL ... M only)  
If it not possible to locate part of the drain in the floor, COL-AK adhesive (J) can be used to increase the height of the foam block and extension piece. The adhesive dabs should be located evenly across the entire base including extension piece.

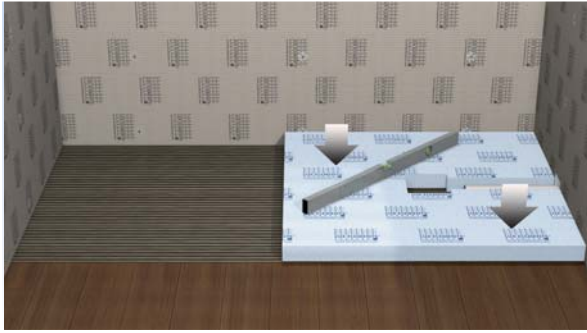
For max height of adhesive please see FAQ's at the back of the instructions.



### Step 5

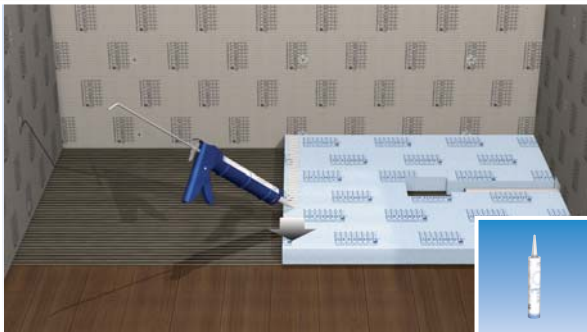
Put on protective gloves and wear eye and breathing protection.

Mix the 5 kg bag of COL-AK adhesive (**J**) with 1150 millilitres of water in a clean bucket which will give the adhesive a stiff consistency. Spread the COL-AK adhesive (**J**) onto the floor of the shower position and drag the notched adhesive trowel (6 – 8 mm) across the surface. The notched adhesive trowel will make a ribbed pattern which will leave just the right amount of adhesive on the floor.



### Step 6

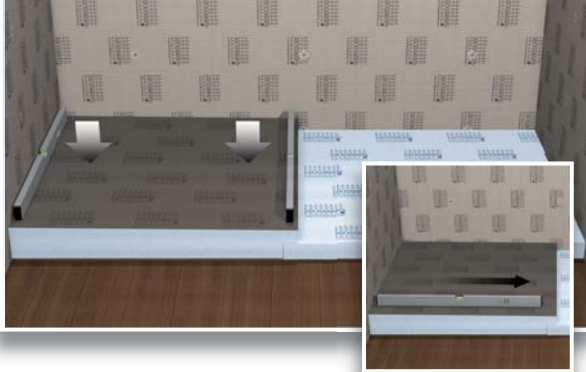
Place the TUB-BOL shower tray base (**B**) into position and bed down onto the adhesive cement. Check that the TUB-BOL shower tray base (**B**) is level in both directions using a suitable level.



### Step 7

Open the COL-MK adhesive tube (**O**) and squeeze a wavy line of adhesive along the top edge of the TUB-BOL shower tray base (**B**) that will join with the TUB-BOL shower tray extension (**C**) using a sealant gun. The overlap is 50 mm so the wavy line of COL-MK adhesive (**O**) should be just under 50 mm wide.

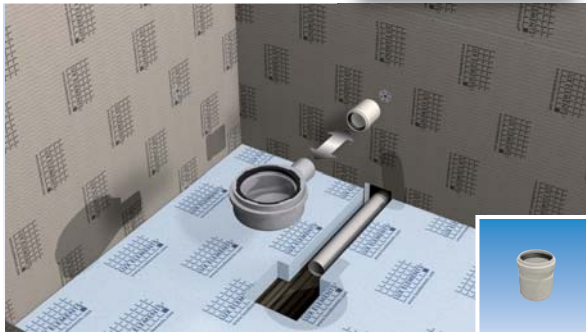
# LUX ELEMENTS®-TUB-BOL ... H & M & TUB-KIT TRAY



## Step 8

Place the TUB-BOL shower tray extension (C) into position and bed down onto the COL-AK adhesive. The TUB-BOL shower tray extension (C) needs to be level across the width of the tray but have a slight slope on the length towards the waste to allow water to run towards the drain.

The slope is pre-formed into the TUB-BOL shower tray extension (C) so all you need to do is make sure that end of the TUB-BOL shower tray extension (C) is completely flat against the end of the TUB-BOL shower tray base (B). Check with a level that you have maintained the slight slope on the TUB-BOL shower tray extension (C).



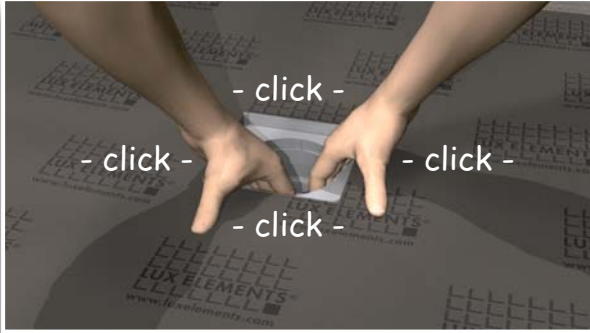
**Step 6\*** For water to drain away properly, the wastepipe must have a fall of at least 3 cm per metre. If you are using 40 mm diameter pipe it is essential that the shower has its own separate wastepipe with as direct run to the soil stack as is possible. Using the waste hole position measurement obtained in step 1, make any necessary alterations to your wastepipe. The wastepipe must be properly supported to hold its own weight and that of the TUB-BAW shower drain base (C).

Smear some TUB-GEL lubricant (P) around the black rubber seal of the shower drain connector (E) and push the shower drain base (D) onto the shower drain connector (E). Spread solvent weld adhesive around the inside of the opposite end of the shower drain connector (E) and then slide onto the wastepipe.



**Step 10** Apply a wavy line of COL-MK adhesive (O) across the surface of the TUB-BOL shower tray base (B) and the end of the overhang lip of the TUB-BOL shower tray extension (C). Lower the TUB-BOL shower tray (A) onto the TUB-BOL shower tray base (B) and push firmly into position. Check with a level that the edges of the TUB-BOL shower tray (A) are level in both directions.



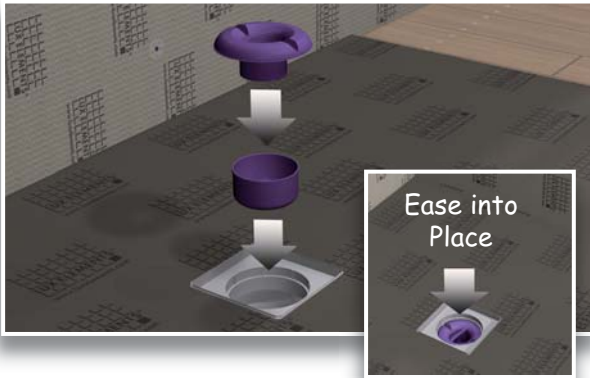


### Step 15

Smear some TUB-GEL lubricant (P) around the black rubber seal of the TUB-BAW shower drain base (D).

Put your fingers through the drain hole in the TUB shower tray (A). Push down on the TUB shower tray (A) and pull the TUB-BAW shower drain base (D) upwards until it clicks into place into the drain hole in the TUB shower tray (A).

After connecting the TUB-BAW shower drain base (D) and the TUB shower tray (A) correctly, the black rubber seal of the TUB-BAW shower drain base (D) should be invisible.



### Step 16

Ease the TUB-BAW shower drain internal bowl (F) into the TUB-BAW shower drain base (D). Ease the TUB-BAW shower drain internal dome (G) into the TUB-BAW shower drain base (D).

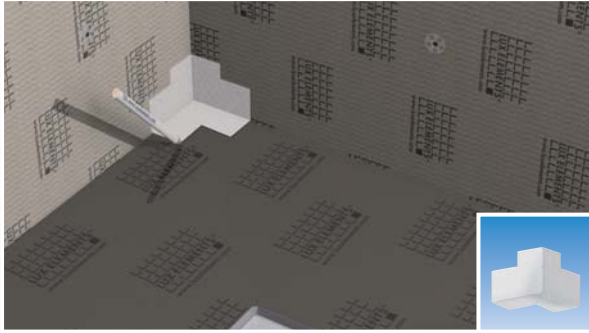
When you have finished you can remove the protective gloves and eye and breathing protection.



### Step 13

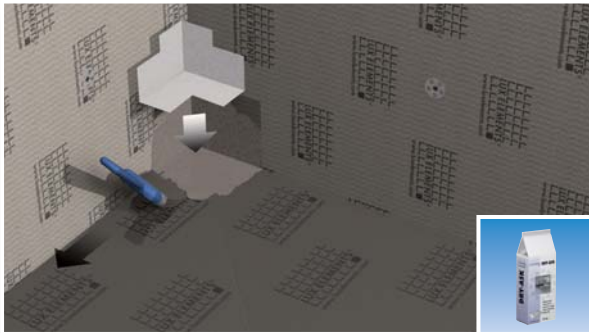
From the roll of DRY-DB waterproofing tape (K) cut three pieces the width of the shower area and one piece the length of the shower area. If the shower area is not wall to wall and is having a glass side panel you only need two pieces the width of the shower area not three.

# LUX ELEMENTS®-TUB-BOL ... H & M & TUB-KIT TRAY



## Step 14

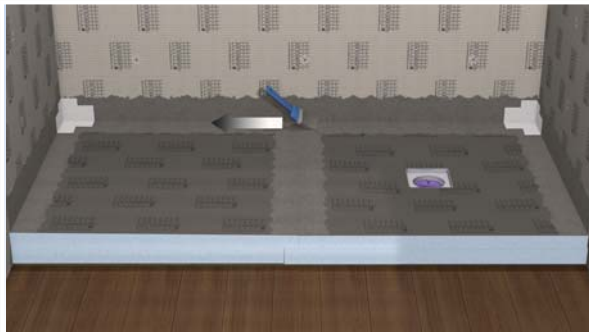
Temporarily place the DRY-DBIE waterproofing internal corners (M) into position and mark around them with a pencil. Once you have marked them they can be removed. This is to show where you need to apply the DRY-ASK tape sealer (L).



## Step 15

Put on protective gloves and wear eye and breathing protection.

Mix the 3.5 kg bag of DRY-ASK tape sealer (L) with 1000 millilitres of water in a clean bucket which will give the sealer a weak consistency. Using a brush, apply a thin layer of DRY-ASK tape sealer (L) to the internal corners of the shower area, slightly bigger than the pencil line marked in step 14.



**Step 16** Place the DRY-DBIE waterproofing internal corners (M) into the internal corners of the shower area and push firmly into the DRY-ASK tape sealer (L). Apply a further thin layer of DRY-ASK tape sealer (L) over the edges of the DRY-DBIE waterproofing internal corners (M).

Where the shower area meets the wall apply a thin layer of DRY-ASK tape sealer (L) to the shower area and the adjoining wall approximately 60 mm wide on both. Apply a thin layer of DRY-ASK tape sealer (L) across the joint between the TUB-BOL shower tray (A) and the TUB-BOL shower tray extension (C) to a width of approx. 120 mm.



## Step 17

Place the strips of DRY-DB waterproofing tape (K) previously cut in step 13 along the edges of the shower area, folding half up the wall and half on the shower area as you go.

Press firmly into the DRY-ASK tape sealer (L) and the tape should also overlap the DRY-DBIE waterproofing internal corners (M). Run the final strip of DRY-DB waterproofing tape (K) across the joint between the TUB-BOL shower tray (A) and the TUB-BOL shower tray extension (C) making sure that it overlaps the tape along the edges.

When you have finished you can remove the protection gloves and eye and breathing protection.

Leave to set for approximately 3 to 5 hours after which the tray is ready for tiling.

Steps 18, 19 & 20 are after the Important Tiling Advice.

## Important Tiling Advice

IT IS ESSENTIAL THAT YOU DO NOT USE A READY MIXED TILE ADHESIVE.

FLEXIBLE CEMENT BASED POWDERED ADHESIVE OR EPOXY BASED TILE ADHESIVE MUST BE USED WITH LUX ELEMENTS®-TUB products.

The LUX ELEMENTS®-TUB shower tray (A) has slopes towards the drain pre-formed into the tray and these must be maintained when tiling.

If you use tiles that are larger than 100 mm it is necessary to cut the tiles along the same lines as are pre-formed into the The LUX ELEMENTS®-TUB shower tray (A) to maintain the slope. For best results and ease of installation we would recommend mosaics or tiles of 50 mm to 100 mm.

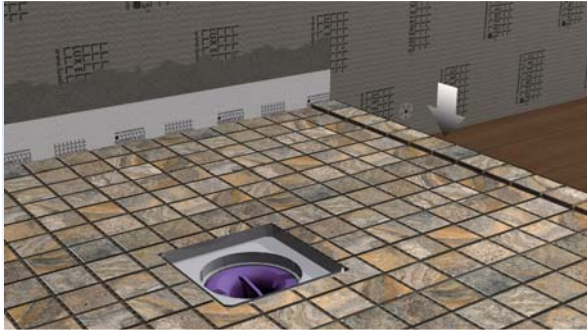
LUX ELEMENTS®-TUB is perfect for use with electrical under tile heating due to its excellent thermal properties. It is however essential that you check with the manufacturer that their product is entirely suitable for the area that you intend to install it in. If you are installing under tile heating it is essential that you consider any areas that will need products fixed to the floor for example shower screens. Avoid installing under tile heating directly below any fixing point to avoid the risk of screwing through the heating.

### Please note

For level access installation on concrete floors, the shower tray can be installed prior to screeding, or retrospectively providing a section can be removed for the shower tray and drain.

Please observe our data sheets. These contain further technical information regarding the assembly and installation of cladding materials. You may download them free of charge from our homepage. We generally advise for tiles < 5 x 5 cm to use epoxy for gluing and grouting.

# LUX ELEMENTS®-TUB-BOL ... H & M & TUB-KIT TRAY



## Step 18

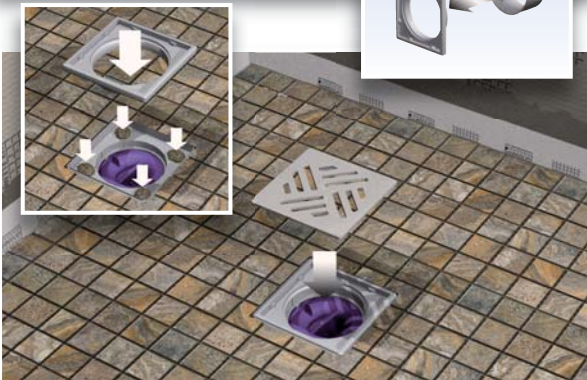
After tiling the base of the shower area, we recommend that you add a further narrow border of tiles approx. 30 mm to 40 mm wide, along the top of the outside edge to act as a water retainer, stopping water running out of the shower area.

The tile lip on the front of the shower tray and extension piece is entirely at the installer's discretion, and only a recommendation from LUX ELEMENTS.



## Step 19

After tiling the shower tray the shower drain top (H) can be fitted. Gently place the shower drain top (H) into the shower tray (A). Measure from the top of the finished tile to the top of the shower drain top (H). From the opposite end/bottom of the shower drain top (H) mark the same distance as previously measured. Using a hand point saw, cut the excess from the bottom of the shower drain top (H). Depending on your cutting skill, it may be necessary to file or sandpaper the cut edge to make it completely flat.



## Step 20

Place a small blob of tile adhesive in the middle of all four sides of the shower drain hole in the TUB-BOL shower tray (A). Gently ease the TUB-BAW shower drain top (H) into position in the TUB-BOL shower tray (A).

Leave to set for approximately 3 to 5 hours. Fill the gap between the edges of the TUB-BAW shower drain top (H) and the start of the tiles with silicone. Place the shower drain finishing grate TUB-BAW (I) into position.

Leave to dry for at least 24 hours before using the shower.

## Frequently Asked Questions

**Q: Can the kits be cut down and by how much?**

We recommend you cut the kits length of 1850 mm to a min of 1200 mm.

**Q: Do I need anything else to waterproof the LUX ELEMENTS®-TUB shower tray?**

No, the TUB shower trays are already waterproof; we supply an adhesive, DRY-ASK, and a tape, DRY-DB, which is applied around the joints (see pages 9 & 10) to fill them.

**Q: Can I use other materials on the LUX ELEMENTS®-TUB shower tray and LUX ELEMENTS®-ELEMENT board, such as vinyl flooring?**

No!! LUX ELEMENTS® material should be used with tiles, for flooring we recommend a tile with a good slip resistance (e.g. R9+)

**Q: Can I use normal floor tiles on the LUX ELEMENTS®-TUB shower tray i.e. 400 x 400 mm?**

Yes you can, although tiles bigger than 100 x 100 mm require cutting to maintain the fall. Mosaic tiles on a mesh are perfect for the TUB shower tray in combination with epoxy based tile adhesive, if you are using 20 x 20 mm tiles or smaller, the area should only be used for barefoot use.

**Q: The drain has a "2 inch solvent connection, can I reduce it to 40 mm?**

The drain has been specially designed to discharge large amounts of water, (60 litres per min at "2 outlet) reducing the waste pipe will affect performance. Please ensure that when reducing to 40 mm outlet, no other service connections are made between the drain and the SVP.

**Q: Can I use my own adhesives for fixing and sealing the LUX ELEMENTS®-TUB trays and LUX ELEMENTS®-ELEMENT boards?**

You could, but we couldn't guarantee the work. COL-AK is a specially designed adhesive, it is strong and won't shrink or crack like many other bonding materials. DRY-ASK waterproofs all the joints in the wet area, it is flexible and highly adhesive and will expand with the DRY-DB tape. This is a critical part of the installation and should be taken very seriously.

**Q: What type of adhesive can I use for fixing tiles?**

Any flexible cement based adhesive or epoxy based tile adhesive is fine for normal tile installation.

**Q: What type of grout should I use.**

Standard wall and floor grouts are fine with LUX ELEMENTS®, however when using small mosaics like 20 x 20 mm glass, epoxy based grouts should be used for additional strength.

**Q: Why do you recommend using LUX ELEMENTS® material to overboard the floor?**

By using LUX ELEMENTS® material you separate contact between the tile and the floor below, this is not possible when using timber on timber. LUX ELEMENTS® material on timber reduces movement of tiles and potential costly refix issues.

LUX ELEMENTS® is made from a hard foam material, this is great for insulation, particularly when used with electric under tile heating (see manufacturers guidelines).

**If you require any assistance or advice, please contact the Helpline on +49 2171/7212-0**

Due to our commitment to continuous product development we reserve the right to alter specifications without notice. Products are guaranteed against manufacturing defects for the first purchaser only and the guarantee is non-transferable.

Our liability under any guarantee expressed or implied is strictly limited to replacement of defective goods or a refund at our discretion and no consequential losses will be entertained. Proof of purchase will be required.

**D**

LUX ELEMENTS GmbH & Co. KG  
An der Schusterinsel 7  
D - 51379 Leverkusen-Opladen

Tel. +49 (0) 21 71 / 72 12-0  
Fax +49 (0) 21 71 / 72 12-40

E-Mail [info@luxelements.de](mailto:info@luxelements.de)  
Web [www.luxelements.com](http://www.luxelements.com)

**F**

LUX ELEMENTS S.A.S  
ZI-31, rue d'Ensisheim  
F - 68190 Ungersheim

Tél. +33 (0) 3 89 83 69 79  
Fax +33 (0) 3 89 48 83 27

E-Mail [info@luxelements.fr](mailto:info@luxelements.fr)  
Web [www.luxelements.fr](http://www.luxelements.fr)



**SOLUTIONS!**  
FOR MODERN BUILDING DESIGN



**D**  
LUX ELEMENTS GmbH & Co. KG  
An der Schusterinsel 7  
D - 51379 Leverkusen-Opladen

Tel. +49 (0) 21 71/72 12-0  
Fax +49 (0) 21 71/72 12-40

E-Mail [info@luxelements.de](mailto:info@luxelements.de)  
Web [www.luxelements.com](http://www.luxelements.com)

**F**  
LUX ELEMENTS S.A.S  
ZI-31, rue d'Ensisheim  
F - 68190 Ungersheim

Tél. +33 (0) 3 89 83 69 79  
Fax +33 (0) 3 89 48 83 27

E-Mail [info@luxelements.fr](mailto:info@luxelements.fr)  
Web [www.luxelements.fr](http://www.luxelements.fr)

