



[DE] **Montageanleitung**

[EN] **Instructions for assembly**

[FR] **Instructions de montage**

[NL] **Montagehandleiding**

[DE] **Bitte beachten:**

Passendes Montage- und Abdichtungszubehör aus dem LUX ELEMENTS-Programm (nicht mitgeliefert):

- Horizontaler oder vertikaler Bodenablauf (erforderlich)
- Unterbauelement (optional)
- Montagezubehör, z. B. TUB-KIT UNI (optional)

[FR] **Veuillez tenir compte :**

Accessoires de pose et d'étanchéité appropriés de la gamme LUX ELEMENTS (non fournis) :

- Siphon de sol horizontal ou vertical (requis)
- Élément support (facultatif)
- Kit de pose et étanchéité, par ex. « TUB-KIT UNI » (facultatif)

[EN] **Please observe:**

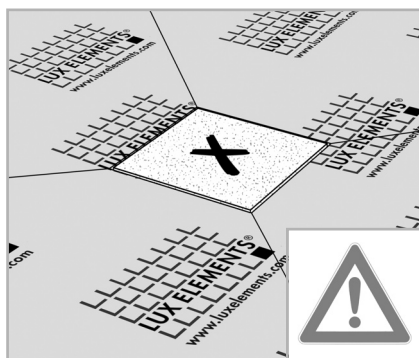
Fitting installation and sealing accessories from the LUX ELEMENTS range (not included):

- Horizontal or vertical floor drain support (required)
- Substrate element (optional)
- Mounting accessories, e.g. TUB-KIT UNI (optional)

[NL] **Let op:**

Geschikte installatie- en afdichtingsaccessoires uit het LUX ELEMENTS-assortiment (niet inbegrepen):

- Horizontale of verticale afvoer (vereist)
- Onderbouwelement (optioneel)
- Montagetoebehoren, bijv. TUB-KIT UNI (optioneel)



[DE] – 'X' = **Bautenschutz**

Bitte beachten: Der Duschboden ist nach der Montage bis zur Verfliesung vor Verschmutzung und Beschädigung zu schützen.

[EN] – 'X' = **Protective cover**

Note: Following installation, the shower base must be protected against dirt and damage until it is tiled.

[FR] – 'X' = **Le couvercle de protection**

Remarque : Après le montage et jusqu'à la pose du carrelage, le receveur de douche doit être protégé contre les salissures et les dommages.

[NL] – 'X' = **Gootbescherming**

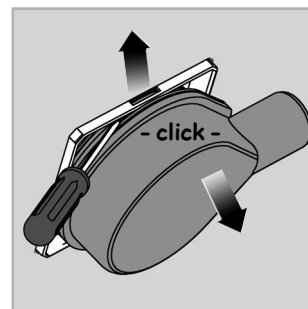
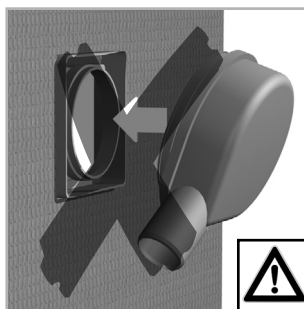
Let op: De douchebodem moet na de montage tot aan de betegeling worden beschermd tegen vuil en beschadiging.

[DE] **BITTE BEACHTEN: Ablauftopf vor Montage nicht durch Einrasten an den Duschboden befestigen!** Falls notwendig, lässt sich der Ablauftopf mit Hilfe eines Hebels (z. B. Schraubendreher) wieder vom Aufnahmegerahmen trennen (siehe Skizze).

[EN] **PLEASE OBSERVE: do not engage the floor drain support to the shower base prior to installation!** If necessary, the drain pan may be removed from the attachment frame with the aid of a lever (i.e. screwdriver – please see drawing).

[FR] **VEUILLEZ TENIR COMPTE : ne pas fixer le siphon de sol au receveur de douche avant le montage !** Si nécessaire, le siphon de sol peut être séparé de son cadre au moyen d'un levier (p.ex. tournevis), du cadre de réception (voir esquisse).

[NL] **LET OP: afvoerbodem niet voor montage vastklikken aan het douchebodemelement!** Indien nodig, is de afvoerpot met behulp van een hefwerktuig (b.v. schroevendraaier) weer scheidbaar van het ingebouwde montageraam (zie schets).



[DE] BITTE BEACHTEN SIE ...

- die technischen Informationen zur Montage und Verlegung von Belagsmaterialien. Generell empfehlen wir bei einer Verlegung von Mosaik von $\leq 10 \times 10$ cm eine Verklebung und Verfugung mit Reaktionsharz.
- Anforderung an den Untergrund: ausreichend trocken, fest, tragfähig und formstabil / frei von Staub, Schmutz, Öl, Fett, losen Teilen sowie Lack- und Dispersionsanstrichen / Trenn- und Sinterschichten sind durch geeignete Maßnahmen zu entfernen
- bei bodengleichen Duscböden, dass bei ...
 - geringer Gefälleausbildung
 - grober Keramik
 - fehlender Duschabtrennung
 - ungünstiger Duschkopfanordnung
 - hohem Wasserdruck bzw. hoher Wassermenge (z. B. bei Schwallbrausen)
 ... Wasser aus dem Duschbereich austreten bzw. es zu einem Wasserrückstau kommen kann.

[FR] VEUILLEZ TENIR COMPTE ...

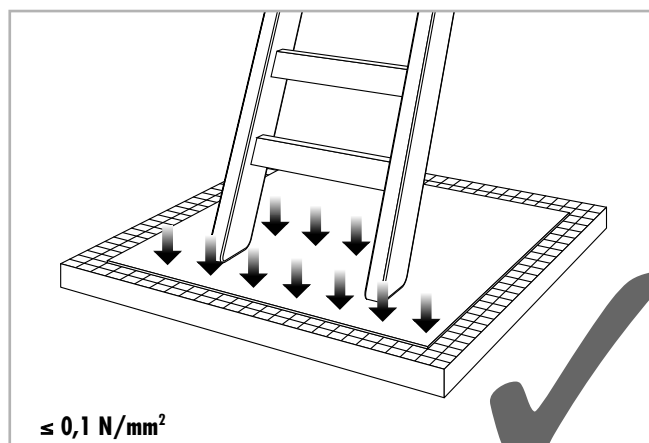
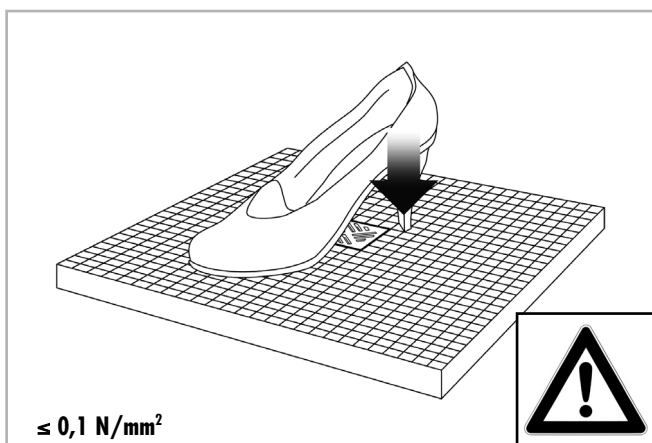
- des informations techniques sur le montage et la pose des matériaux de revêtement. Pour la mise en oeuvre de mosaïque d'un format $\leq 10 \times 10$ cm nous conseillons un collage et un jointoyement à l'époxy.
- Etat de surface requis: Doit être sain, sec, stable, plan et résistant / Doit être exempt de poussière, saleté, huiles, graisse et d'éléments résiduels non-adhérents / Toutes les couches de résidus doivent être enlevées en utilisant les moyens mécaniques appropriés
- que les receveurs de douche à l'italienne peuvent dans les cas suivants avec ...
 - une faible pente
 - une céramique à surface très irrégulière
 - une absence de cloison de douche
 - un placement défavorable de la pomme de douche
 - ne pression ou une quantité d'eau élevée (p.ex. en cas de douche torrent ou ciel de pluie)
 ... présenter un risque de débordement et engendrer des reflux d'eau.

[EN] PLEASE OBSERVE ...

- The technical informations regarding the installation and laying of covering materials. We generally advise for tiles $\leq 10 \times 10$ cm to use epoxy for gluing and grouting.
- Requirements of substrate: sufficiently dry, strong, load-bearing and form-stable / free from dust, dirt, oil, grease and loose particles and varnish and dispersion layers / parting and sintering layers must be removed by suitable means
- That with flush with the floor shower bases, in the case of ...
 - a low slope
 - rough ceramics
 - the lack of a shower enclosure
 - unfavourable shower head placement
 - high water pressure or high quantity of water (e.g. in the case of flood showers)
 ... water can run out of the shower area or accumulate

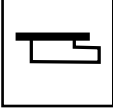

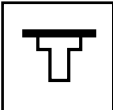
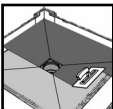
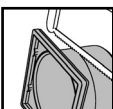
[NL] LET OP ...

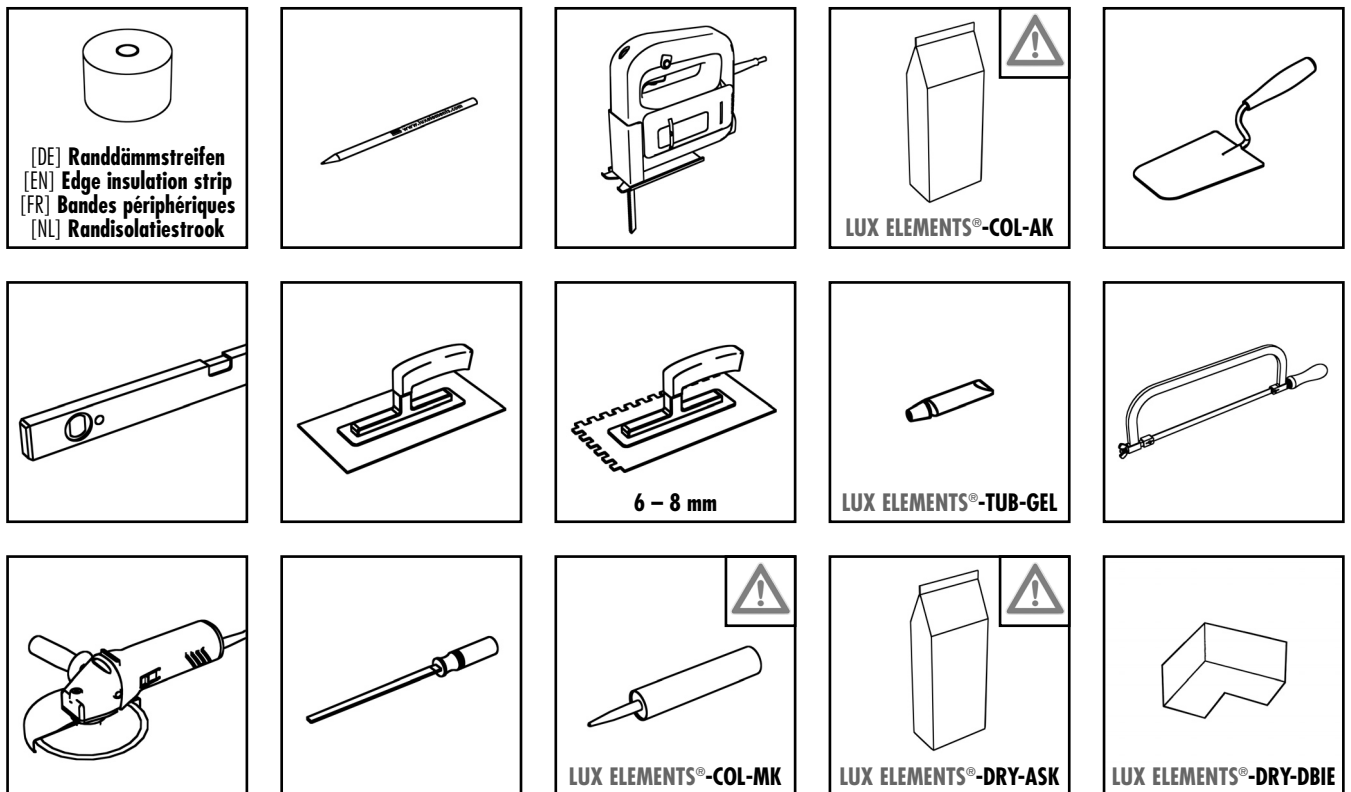
- de technische informatie m.b.t. plaatsing van afdekmaterialen. Algemeen adviseren wij bij het kleven en het voegen van mosaik $\leq 10 \times 10$ cm een epoxylijm te gebruiken.
- Eisen aan de ondergrond: voldoende droog, vast, draagkrachtig en vormvast / stofvrij, schoon, olie- en vetvrij / losse verf, tussenlagen en lakdelen op passende wijze verwijderen
- bij inloopdouches maken we u er op attent dat er bij ...
 - geringe helling
 - grove keramiek
 - niet voorhanden douche afscheiding
 - ongunstige plaatsing van de douchekop
 - hoge waterdruk resp. grote hoeveelheden water (bv. stortdouchen)
 ... water uit het doucheberek kan komen resp. dat het tot wateropstuwung kan komen.



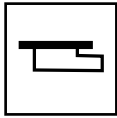
INHALT · SUMMARY · SOMMAIRE · INHOUD

Seite - Page
Page - Pagina

	ECO MQ/MR	[DE] ... + Unterbauelement + waagerechter Ablauf [EN] ... + substrate element + horizontal floor drain support [FR] ... + élément support + siphon de sol horizontal [NL] ... + onderbouwelement + horizontale afvoer	4	1.1
	ECO MQ/MR	[DE] ... + Unterbauelement + senkrechter Ablauf Ø 145–160 mm [EN] ... + substrate element + vertical floor drain support Ø 145–160 mm [FR] ... + élément support + siphon de sol vertical Ø 145–160 mm [NL] ... + onderbouwelement + verticale afvoer Ø 145–160 mm	5	1.2
	ECO MQ/MR	[DE] ... + Unterbauelement + senkrechter Ablauf Ø 100 mm [EN] ... + substrate element + vertical floor drain support Ø 100 mm [FR] ... + élément support + siphon de sol vertical Ø 100 mm [NL] ... + onderbouwelement + verticale afvoer Ø 100 mm	6	1.3
	ECO MQ/MR	[DE] Abdichtung [EN] Sealing [FR] Etanchéification [NL] Afdichting	7	2
	ECO MQ/MR	[DE] Rahmen [EN] Frame [FR] Cadre [NL] Frame	8	3



 **LUX ELEMENTS®-COL-AK / LUX ELEMENTS®-DRY-ASK:** [DE] **HINWEIS:** Schutzhandschuhe/-kleidung, Augen- und Gesichtsschutz tragen · [EN] **PLEASE NOTE:** Wear protective gloves/clothing, eye and face protection · [FR] **REMARQUE:** Porter des gants/vêtements de protection, équipement de protection des yeux/du visage · [NL] **LET OP:** Beschermende handschoenen/kleding, oog- en gelaatsbescherming dragen — **LUX ELEMENTS®-COL-MK:** [DE] **HINWEIS:** Augen- und Gesichtsschutz tragen · [EN] **PLEASE NOTE:** Wear eye and face protection · [FR] **REMARQUE:** Porter équipement de protection des yeux/du visage · [NL] **LET OP:** Oog- en gelaatsbescherming dragen

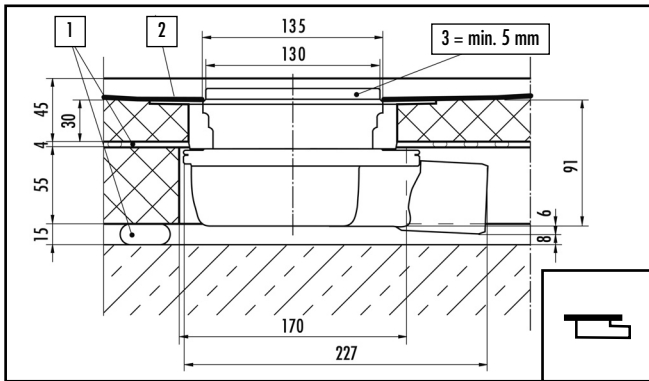


ECO MQ/MR

[DE] ... + Unterbauelement + waagerechter Ablauf
 [EN] ... + substrate element + horizontal floor drain support
 [FR] ... + élément support + siphon de sol horizontal
 [NL] ... + onderbouwelement + horizontale afvoer

4

1.1



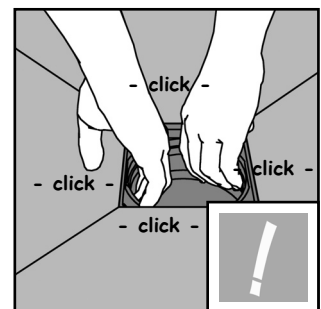
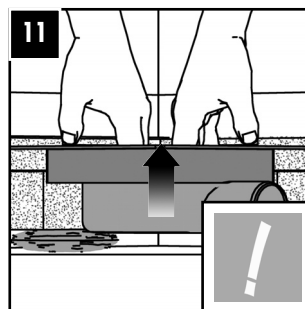
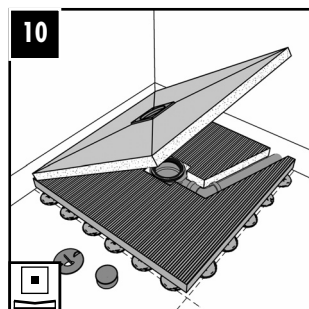
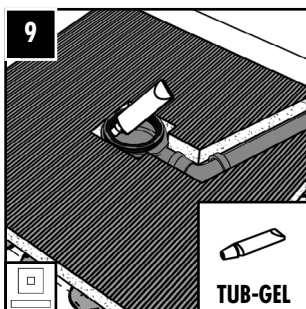
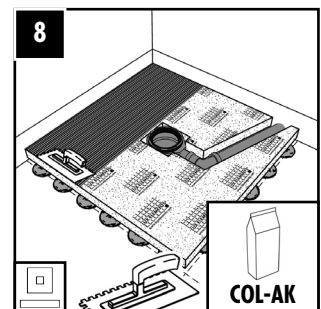
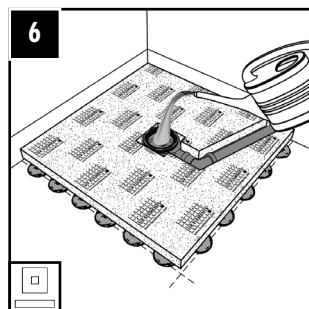
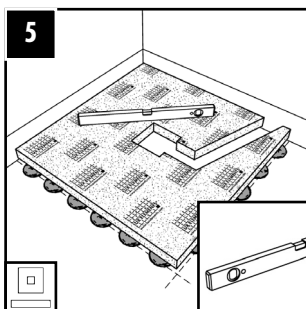
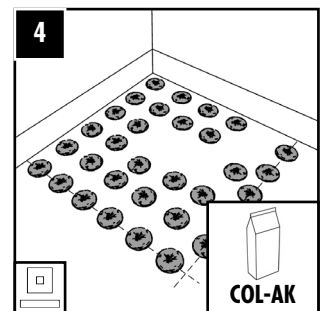
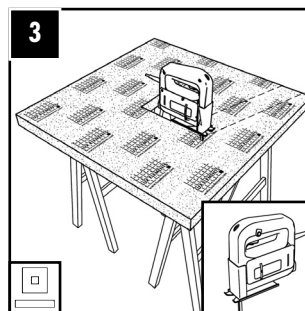
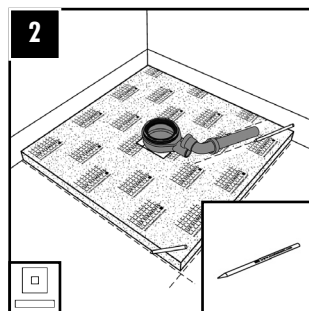
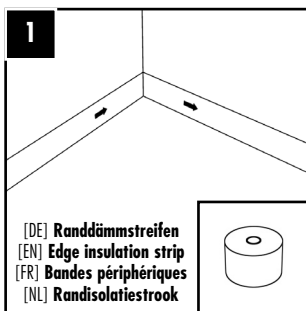
[DE] 1 – Kleberschicht / 2 – Abdichtung* / 3 – Höhenanpassung
 Hinweis: Maße in mm. Maße ohne Kleberschichten und Fliesen. *

[EN] 1 – Adhesive layer / 2 – Seal* / 3 – Height adjustment
 Please note: Dimensions in mm. Measures without adhesive coating and tiles. *

[FR] 1 – Couche de colle / 2 – Etanchéité* / 3 – Adaptation en hauteur
 REMARQUE : Toutes les dimensions sont en mm. Dimensions sans colle et carrelage.

[NL] 1 – Lijm laag / 2 – Afdichting* / 3 – Hoogteaanpassing
 Opgelet: Maten in mm. Maten zijn zonder lijmbed en tegels.

* [DE] nicht werkseitig – siehe Seite 7 / [EN] not factory sealed – see page 7
 [FR] pas en usine – voir page 7 / [NL] niet fabrieksmatig afgedicht – zie p. 7



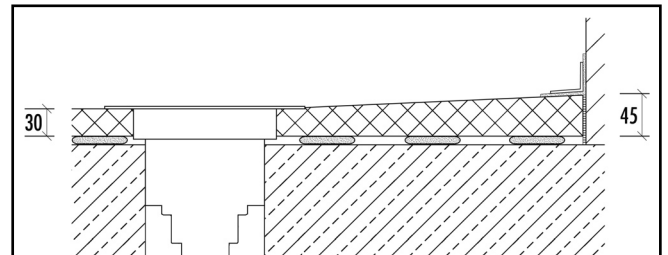
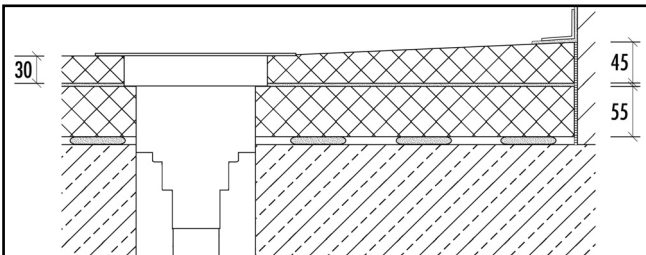


ECO MQ/MR

[DE] ... + Unterbauelement + senkrechter Ablauf \varnothing 145–160 mm
 [EN] ... + substrate element + vertical floor drain support \varnothing 145–160 mm
 [FR] ... + élément support + siphon de sol vertical \varnothing 145–160 mm
 [NL] ... + onderbouwelement + verticale afvoer \varnothing 145–160 mm

5

1.2



[DE] **senkrechter Ablauf mit Unterbauelement**

Hinweis: Maße in mm. Maße ohne Kleberschichten und Fliesen.

[EN] **Floor drain support vertical with substrate element**

Please note: Dimensions in mm. Measures without adhesive coating and tiles.

[FR] **Siphon de sol vertical avec élément de support ou de compensation**

REMARQUE : Toutes les dimensions sont en mm. Dimensions sans colle et carrelage.

[NL] **Afvoer verticaal met onderbouwelement**

Opgelet: Maten in mm. Maten zijn zonder lijmband en tegels.

[DE] **senkrechter Ablauf ohne Unterbauelement**

Hinweis: Maße in mm. Maße ohne Kleberschichten und Fliesen.

[EN] **Floor drain support vertical without substrate element**

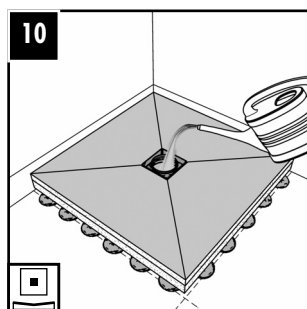
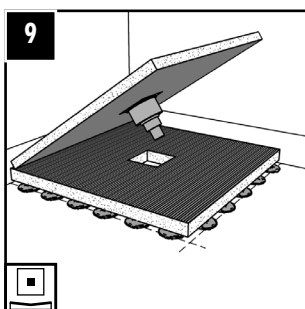
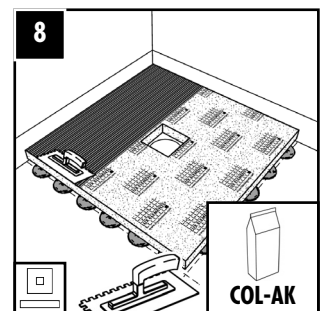
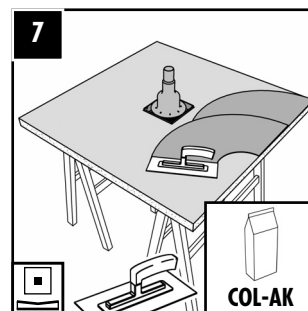
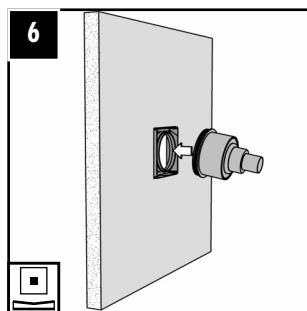
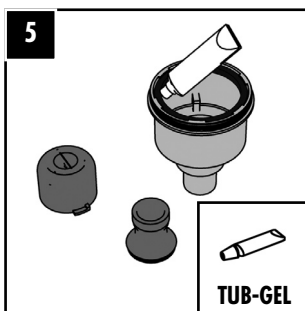
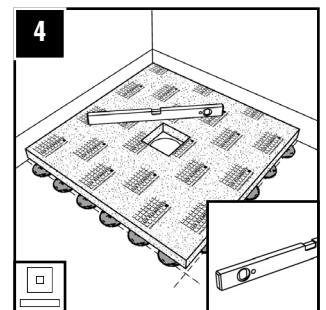
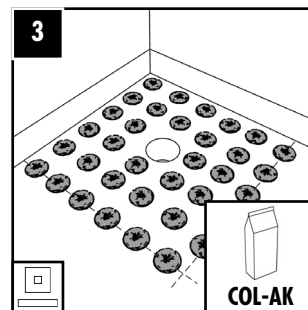
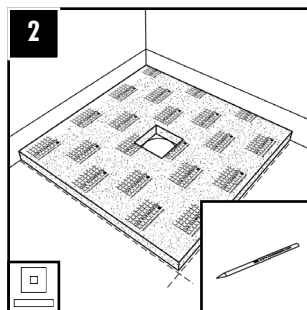
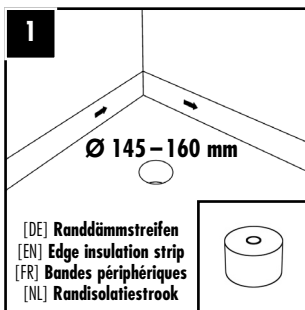
Please note: Dimensions in mm. Measures without adhesive coating and tiles.

[FR] **Siphon de sol vertical sans élément de support ou de compensation**

REMARQUE : Toutes les dimensions sont en mm. Dimensions sans colle et carrelage.

[NL] **Afvoer verticaal zonder onderbouwelement**

Opgelet: Maten in mm. Maten zijn zonder lijmband en tegels.



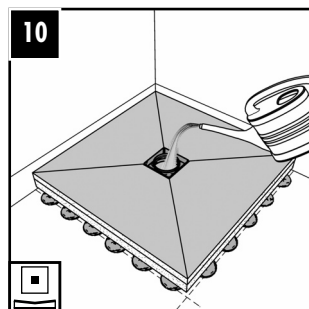
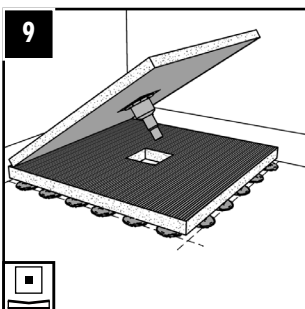
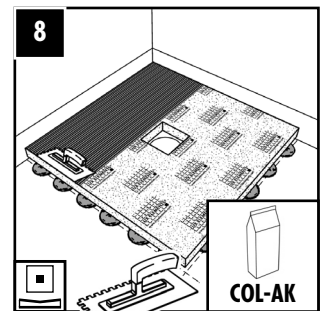
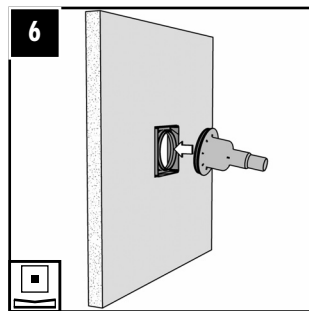
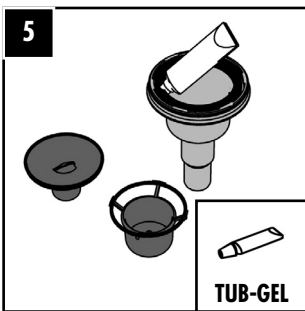
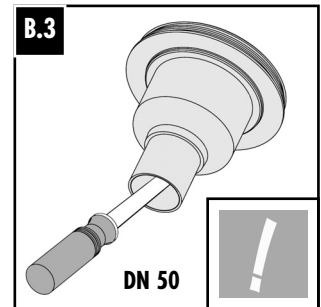
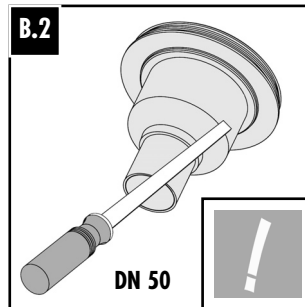
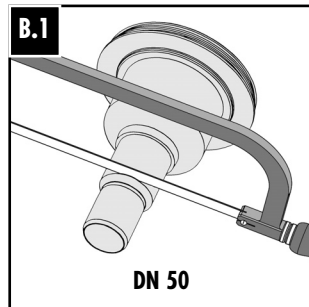
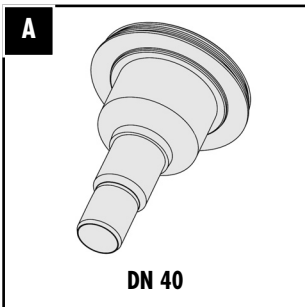
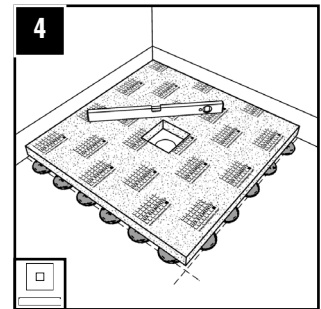
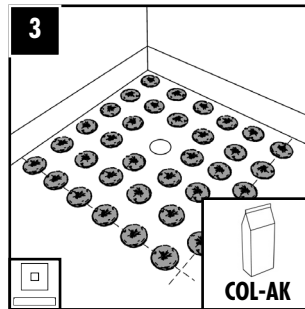
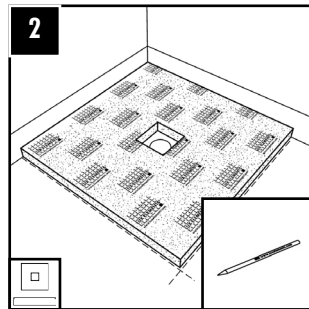
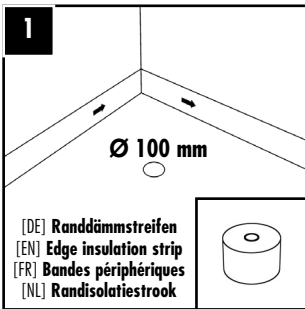


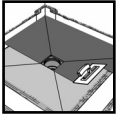
ECO MQ/MR

[DE] ... + Unterbauelement + senkrechter Ablauf \varnothing 100 mm
 [EN] ... + substrate element + vertical floor drain support \varnothing 100 mm
 [FR] ... + élément support + siphon de sol vertical \varnothing 100 mm
 [NL] ... + onderbouwelement + verticale afvoer \varnothing 100 mm

6

1.3



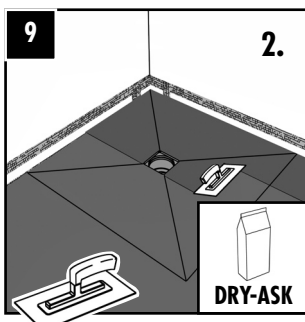
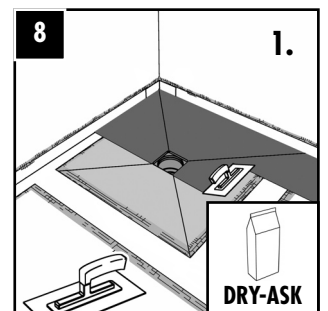
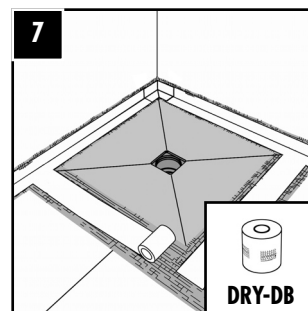
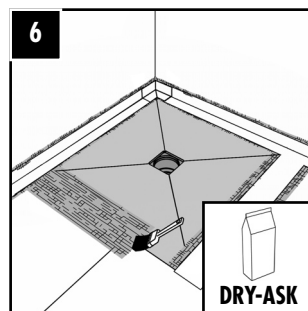
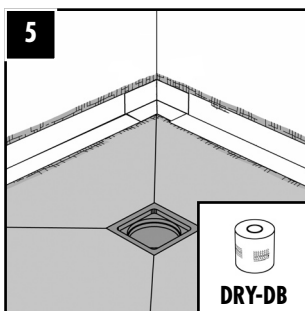
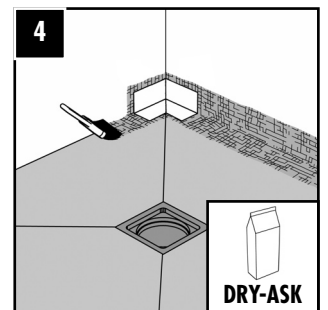
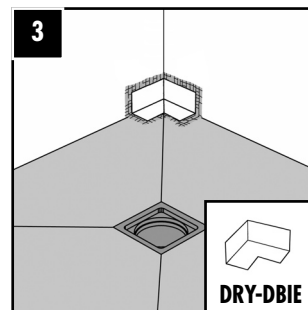
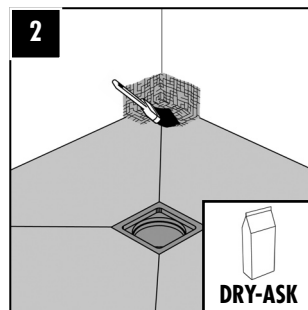
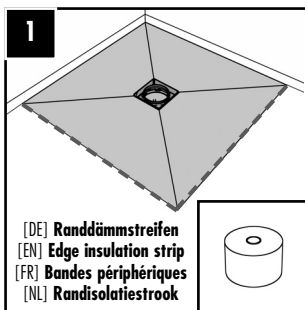
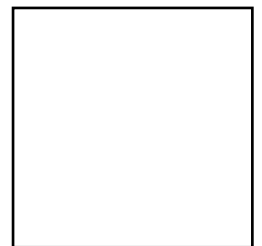
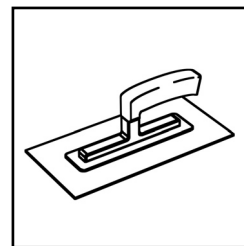
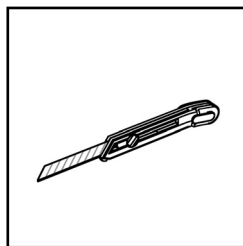
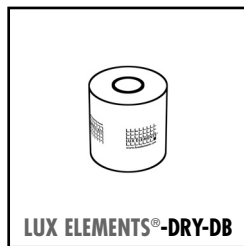
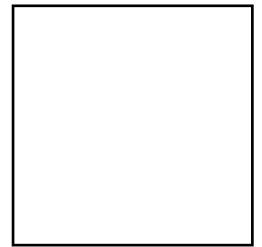
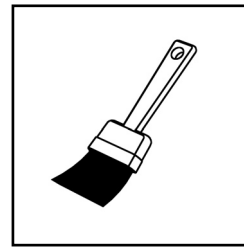
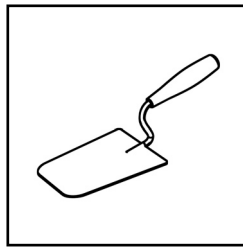
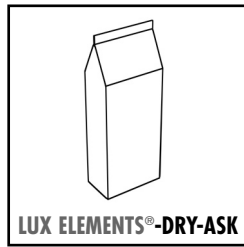
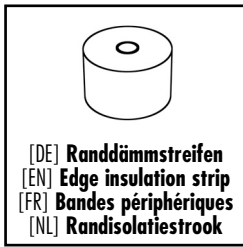


ECO MQ/MR

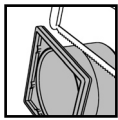
[DE] Abdichtung
[EN] Sealing
[FR] Etanchéification
[NL] Afdichting

7

2



! DRY-ASK
[DE] 1. Auftrag + 2. Auftrag \geq 2 mm
[EN] 1st application + 2nd application \geq 2 mm
[FR] 1. couche + 2. couche \geq 2 mm
[NL] 1. laag + 2. laag \geq 2 mm

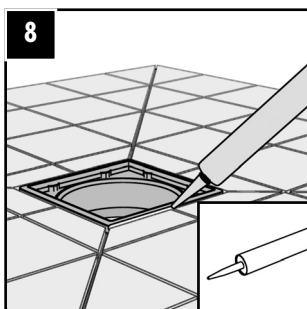
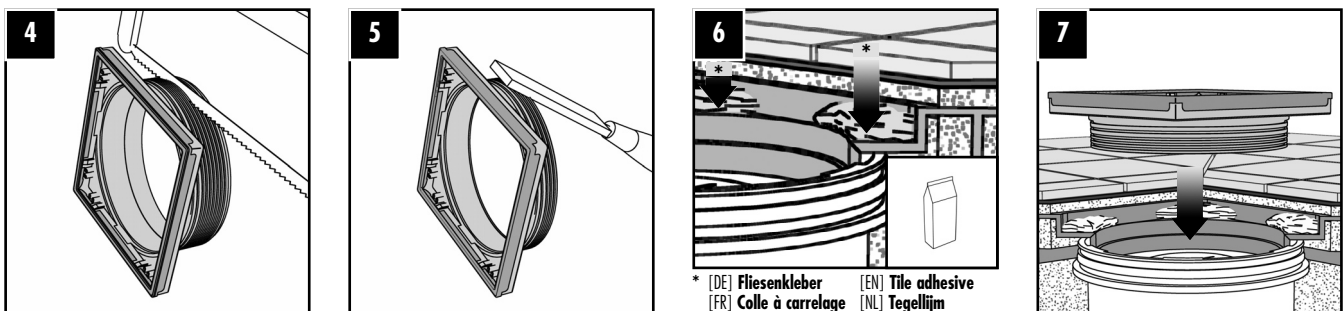
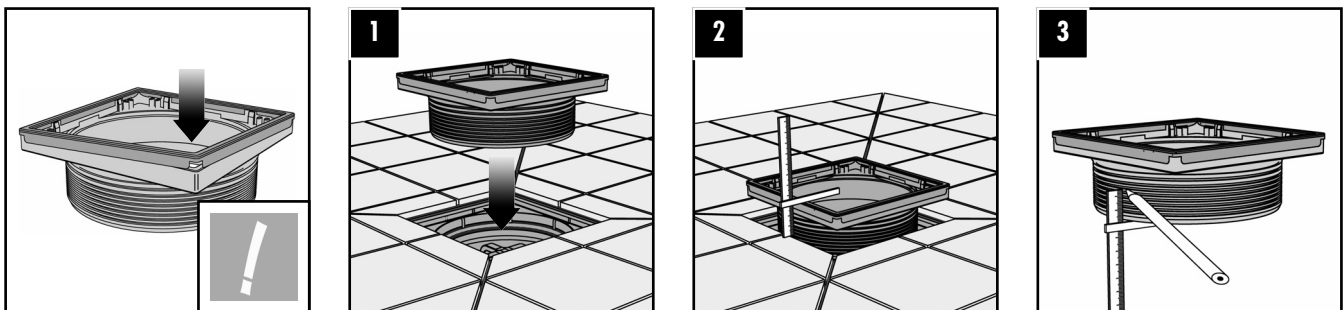
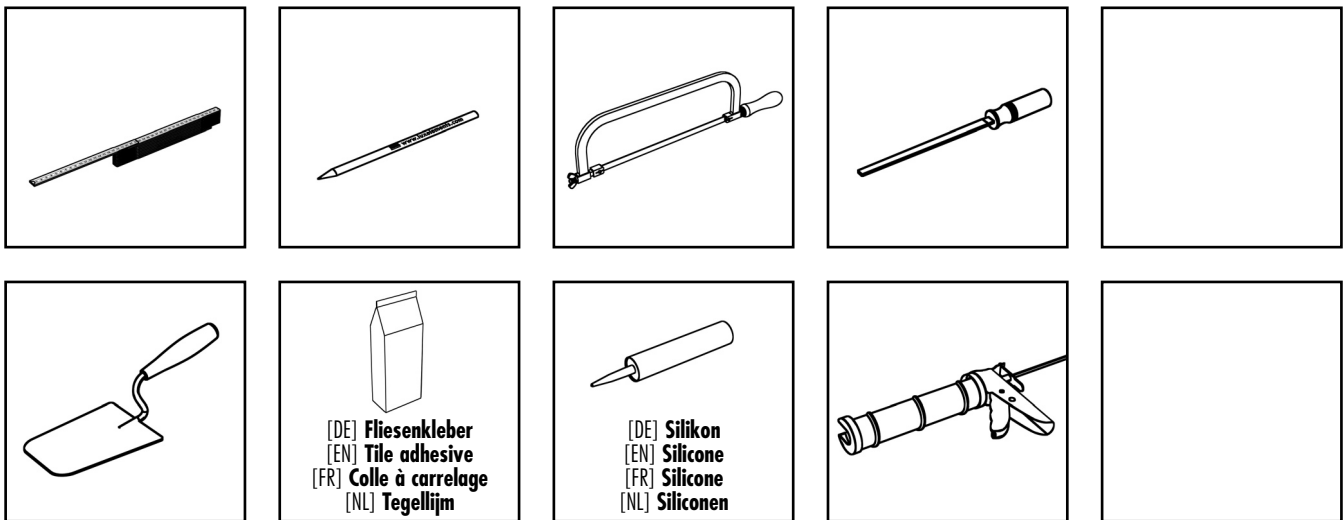


ECO MQ/MR

[DE] Rahmen
[EN] Frame
[FR] Cadre
[NL] Frame

8

3



Belagsstärke / Upper layer thickness / Epaisseur de la couche supérieure / Dikte van de bekleding

Maße = Fliesen + Kleber / Dimensions = tile + adhesive / Dimensions = carreau + colle / Maten = tegel + lijm

■ **Rost / Grate / Grille / Rooster LUX ELEMENTS®-TUB-RA-S, -DS, -DA, -DC, -DL, -DM:**

Duschboden / Shower base / Receveur de douche / Douchebodem: mindestens / at least / au moins / minstens 5 mm

■ **Rost / Grate / Grille / Rooster LUX ELEMENTS®-TUB-RA-DF:**

Duschboden / Shower base / Receveur de douche / Douchebodem: mindestens / at least / au moins / minstens 14 mm
Befliesbare Abdeckung / Tileable cover / Cadre de réception à carrelage / Bekleding: 11 mm

■ **Rost / Grate / Grille / Rooster LUX ELEMENTS®-TUB-RA-DV:**

Duschboden / Shower base / Receveur de douche / Douchebodem: mindestens / at least / au moins / minstens 5 mm
Befliesbare Abdeckung / Tileable cover / Cadre de réception à carrelage / Bekleding: 8 mm